

LAND ROVER DEFENDER



ABOVE & BEYOND

DEFENDER



ENTER

scroll or swipe to interact



BY APPOINTMENT TO
H.M. THE QUEEN
MANUFACTURERS OF
MOTOR VEHICLES
JAGUAR LAND ROVER LIMITED
COVENTRY



BY APPOINTMENT TO
H.M. THE DUKE OF EDINBURGH
MANUFACTURERS OF
MOTOR VEHICLES
JAGUAR LAND ROVER LIMITED
COVENTRY



BY APPOINTMENT TO
H.M. THE PRINCE OF WALES
MANUFACTURERS OF
MOTOR VEHICLES
JAGUAR LAND ROVER LIMITED
COVENTRY



ABOVE & BEYOND

Ever since the first Land Rover vehicle was conceived in 1947, we have built vehicles that challenge what is possible. These in turn have challenged their owners to explore new territories and conquer difficult terrains. Our vehicles epitomise our brand. Vehicles with exemplary design credentials and engineering capabilities. Which is how we continue to break new ground, defy conventions and encourage each other to go further. Land Rover truly enables you to make more of your world, to go above and beyond.



DESIGN

ACCESSORY PACKS

CAPABILITY

PRACTICALITY

TECHNOLOGY

PERSONALISATION

DESIGNED. LIKE NO OTHER

How do you redefine an icon? Push harder. Dig deeper. You go above and beyond. You capture its very essence. Then you reimagine it. You design, engineer and build it without compromise. Until you've created a vehicle that's absolutely of the moment. One that's visually compelling, with a go-anywhere-do-anything attitude and toughness at its very core. Capable of great things, this is Land Rover Defender. It couldn't be anything else.



Off-road sequences on dedicated land with full permissions. Challenging off-road driving requires full training and experience. Risk of injury and damage. Never drive beyond your abilities. Always check route, surface, base and exit before entering frozen terrain.

Vehicle shown is Defender 90 HSE in Pangea Green with optional Satin Protective Film and optional features fitted.

Vehicles shown throughout are from the Land Rover global range. Specifications, optional features and their availability may differ by vehicle specification (model and powertrain), or require the installation of other features in order to be fitted. Please contact your local Retailer for more details, or configure your vehicle online. All in car features should be used by drivers only when safe.



DESIGN

ACCESSORY PACKS

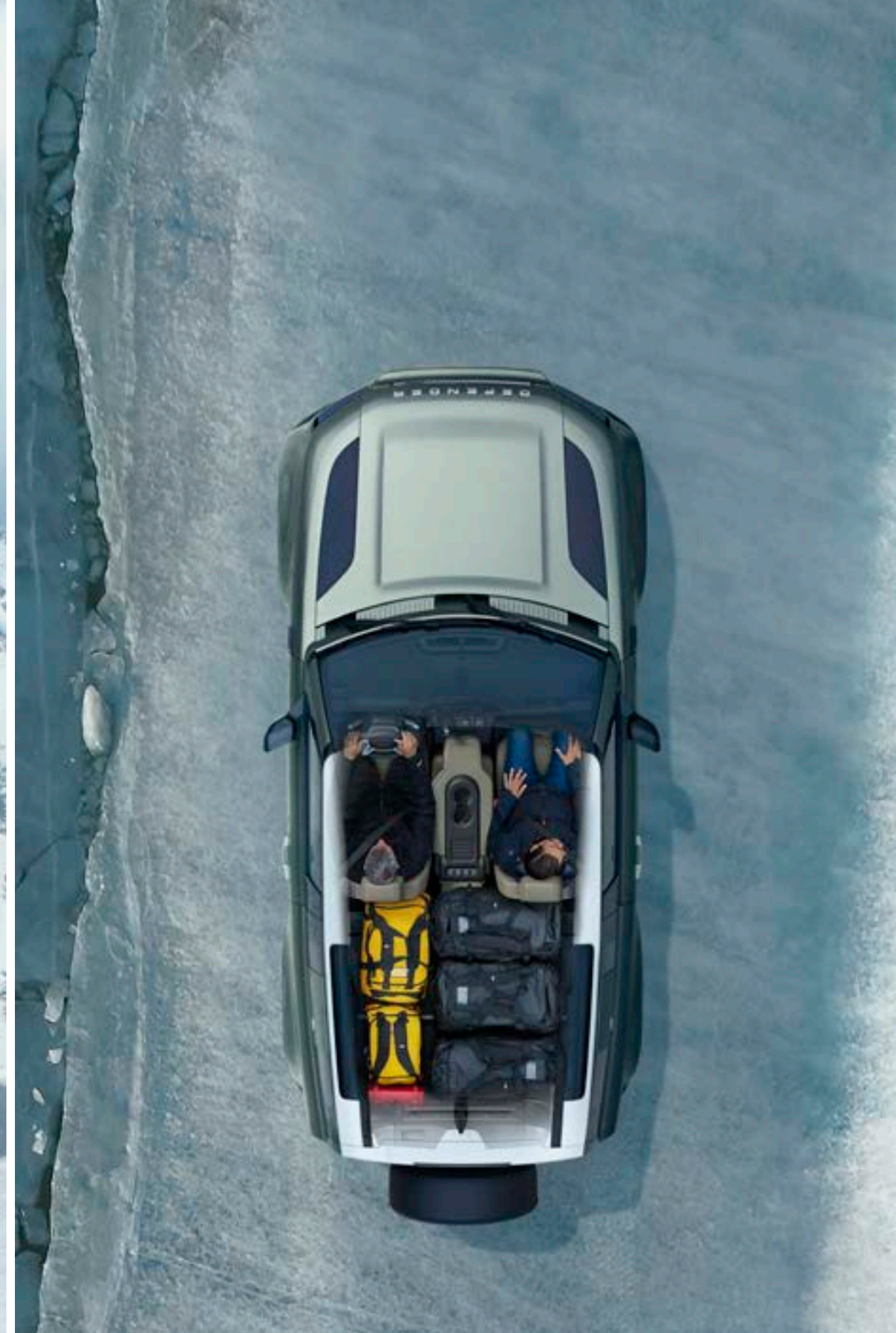
CAPABILITY

PRACTICALITY

TECHNOLOGY

PERSONALISATION

Everything about Defender exudes quiet confidence; from its purposeful stance to its reductive, sophisticated surfaces, its integrity is beyond reproach. Both highly desirable and seriously capable. Tough, durable and highly functional, Defender's interior bears testimony to the vehicle's spirit of adventure. Structural elements are made of robust materials. Intuitive technologies - like those you're more likely to find on a smartphone - deliver a connected, engaged drive without taking anything away from the vehicle's ambience. Added to which, everything has been designed with practicality in mind. With a cabin walk-through¹, an optional front jump seat¹² and centre console¹², the space can be configured any number of ways. Including yours.



¹Model dependent. ²Linked feature.

All in-car features should be used by drivers only when safe for them to do so. Drivers must ensure they are in full control of the vehicle at all times.



DESIGN

ACCESSORY PACKS

CAPABILITY

PRACTICALITY


TECHNOLOGY

PERSONALISATION

PURPOSEFUL DESIGN, ENDLESS POSSIBILITIES

Defender is our most capable Land Rover yet. You can opt for either a 90 or 110 body design together with a choice from three levels of finish; S, SE and HSE. The differences include their individual wheels - size and style - interior trim and levels of technology. Both body designs are available with five or six seats¹, with 110 offering the option of a third row with 5 + 2 seats².

Select from Defender, Defender X-Dynamic, Defender XS Edition, Defender X, Defender V8, Defender V8 Carpathian Edition and Defender Hard Top - and four Accessory Packs, each with a distinctive character. It all adds up to the greatest possible levels of personalisation.

 BUILD YOUR OWN

¹Linked feature. Model dependent. ²Only available as part of a pack. Model dependent.

Vehicles shown are Defender 90 HSE and Defender 110 HSE in Pangea Green with optional Satin Protective Film and optional features fitted.

90



110



DESIGN

ACCESSORY PACKS

CAPABILITY

PRACTICALITY

TECHNOLOGY

PERSONALISATION

NEW TO DEFENDER

DEFENDER V8

Building on Defender's unmatched capability and optimum durability, Defender V8 offers an even more engaging off-road experience and an agile on-road experience. The quad exhaust offers a rich, deep sound and adds to Defender's already powerful on-road presence and visual appeal. The Terrain Response Dynamic Program, exclusive to Defender V8, builds upon the

vehicle's capable nature. Climb inside and you will experience a true driver's car with interior touches and settings available exclusively to V8. Throttle connection is tuned for maximising on-road character and off-road control. The paddle shifters provide quick gear changes and added convenience. Available in 90 and 110.

[> EXPLORE THIS MODEL](#)



Vehicle shown is Defender 110 V8 in Carpathian Grey.

NEW TO DEFENDER

DEFENDER V8 CARPATHIAN EDITION

The definitive Defender. With the same off-road control and on-road character as Defender V8, the Carpathian Edition adds to V8's raw power with a unique visual presence. Available in 90 and 110.

> [EXPLORE THIS MODEL](#)

DEFENDER XS EDITION

Enhancing the vehicle's silhouette, Defender XS Edition features body coloured lower cladding and wheel arches alongside a suite of features fitted as standard. Available in 90 and 110.

> [EXPLORE THIS MODEL](#)



Vehicle shown on top is Defender 110 V8 Carpathian Edition in Carpathian Grey with Satin Protective Film.
Vehicle shown on bottom is Defender 90 XS in Silicon Silver.



DESIGN

ACCESSORY PACKS

CAPABILITY

PRACTICALITY

TECHNOLOGY

PERSONALISATION

NEW TO DEFENDER

TECHNOLOGY

Defender comes with a host of innovative and practical technologies. From Wireless charging with phone signal booster¹ to the new optional 11,4" Touchscreen.

> FIND OUT MORE

EXTERIOR PACKS

New exterior packs make it even easier to create your perfect Defender. Noble Chrome detailing in the Defender Bright Exterior Pack and Extended Bright Exterior Pack² catch the eye, while the Extended Black Exterior Pack³ adds understated assertiveness to Defender X-Dynamic, Defender X and Defender V8.

[FIND A RETAILER](#)

¹Only available as part of a pack. Model dependent. ²Linked feature. Model dependent. ³Optional feature. Model dependent.

Interior shown is Defender 90 V8 with Optional 11,4" Pivi Screen fitted.



DESIGN

ACCESSORY PACKS

CAPABILITY

PRACTICALITY

TECHNOLOGY

PERSONALISATION

EXTERIOR DESIGN



Vehicle shown is Defender 90 HSE in Pangea Green with optional Satin Protective Film and optional features fitted.



DESIGN

ACCESSORY PACKS

CAPABILITY

PRACTICALITY

TECHNOLOGY

PERSONALISATION

Impressive proportions and a reassuringly recognisable silhouette help define Defender's arresting looks. Whilst short overhangs, great ground clearance and upright front and rear elevations give credence to the vehicle's capabilities. Floating pillars and alpine lights add to its personality, with solid shoulders and powerful squared-off wheel arches that communicate the vehicle's purposeful stance. This is design with undoubted integrity. And unrivalled purpose.



DESIGN

ACCESSORY PACKS

CAPABILITY

PRACTICALITY

TECHNOLOGY

PERSONALISATION

Approachable. Confident. No nonsense. With its compact, upright look, Defender's front profile features a raised bonnet, sculpted grille and detailing. Together with such characterful touches as round headlights and some of our most sophisticated surfaces yet, these aspects help reinforce the vehicle's overriding sense of capability.



DESIGN

ACCESSORY PACKS

CAPABILITY

PRACTICALITY

TECHNOLOGY

PERSONALISATION

A celebration of design and functionality. The perfect fusion of form, vertical stance and attitude. From behind, the vehicle looks both utterly modern and perfectly planted. Whilst details like the side-opening tailgate with externally mounted full-size spare wheel and characterful tail lights all point to Defender's distinctive nature.



DESIGN

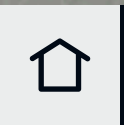
ACCESSORY PACKS

CAPABILITY

PRACTICALITY

TECHNOLOGY

PERSONALISATION



DESIGN

ACCESSORY PACKS

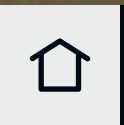
CAPABILITY

PRACTICALITY

TECHNOLOGY

PERSONALISATION





DESIGN

ACCESSORY PACKS

CAPABILITY

PRACTICALITY

TECHNOLOGY

PERSONALISATION

INTERIOR DESIGN



Interior shown is Defender 90 SE in Khaki/Ebony. Imagery shows discontinued Robust Canvas seat facings. Please check current specifications with your Land Rover Retailer.



DESIGN

ACCESSORY PACKS

CAPABILITY

PRACTICALITY

TECHNOLOGY

PERSONALISATION



EXPOSED STRUCTURAL SURFACES. POWDER-COATED ACCENTS

Uncompromisingly tough, the visible fixings for the major interior components underscore Defender's absolute integrity. Strength, durability and highly functional interior architecture are in its DNA.

For instance, the interior's exposed structural surfaces are finished in a highly durable textured powder coat, extending to the steering wheel and doors*. Built to take the knocks, the cross car beam is an integral structure which adds greatly to Defender's strength.

*When Meridian™ audio system is fitted.



DESIGN

ACCESSORY PACKS

CAPABILITY

PRACTICALITY

TECHNOLOGY

PERSONALISATION



DESIGN

ACCESSORY PACKS

CAPABILITY

PRACTICALITY

TECHNOLOGY

PERSONALISATION

DURABLE INTERIOR MATERIALS

Defender's interior features durable materials in areas that need it most. Hard-wearing seat materials include Windsor leather combined with Kvadrat Steelcut Premium wool textile. A choice of veneers and finishers are available including open pore wood with a Rough-cut Walnut or Natural Smoked Dark Oak veneer.

Defender X-Dynamic is fitted with Robustec - our most durable material. PU platelets mean it's incredibly hardwearing and abrasion resistant. When tested, Robustec withstood the equivalent of a 30-year life cycle - more than triple the industry standard.

Defender V8 has exclusive touches such as Ebony Windsor leather seats with Dinamica Miko suedecloth and Robustec accents, a unique Alcantara suedecloth steering wheel rim and leather gear shifter. Dinamica® is produced from recycled polyester fibres and plastics in a process which uses no harmful chemical substances.



DESIGN

ACCESSORY PACKS

CAPABILITY

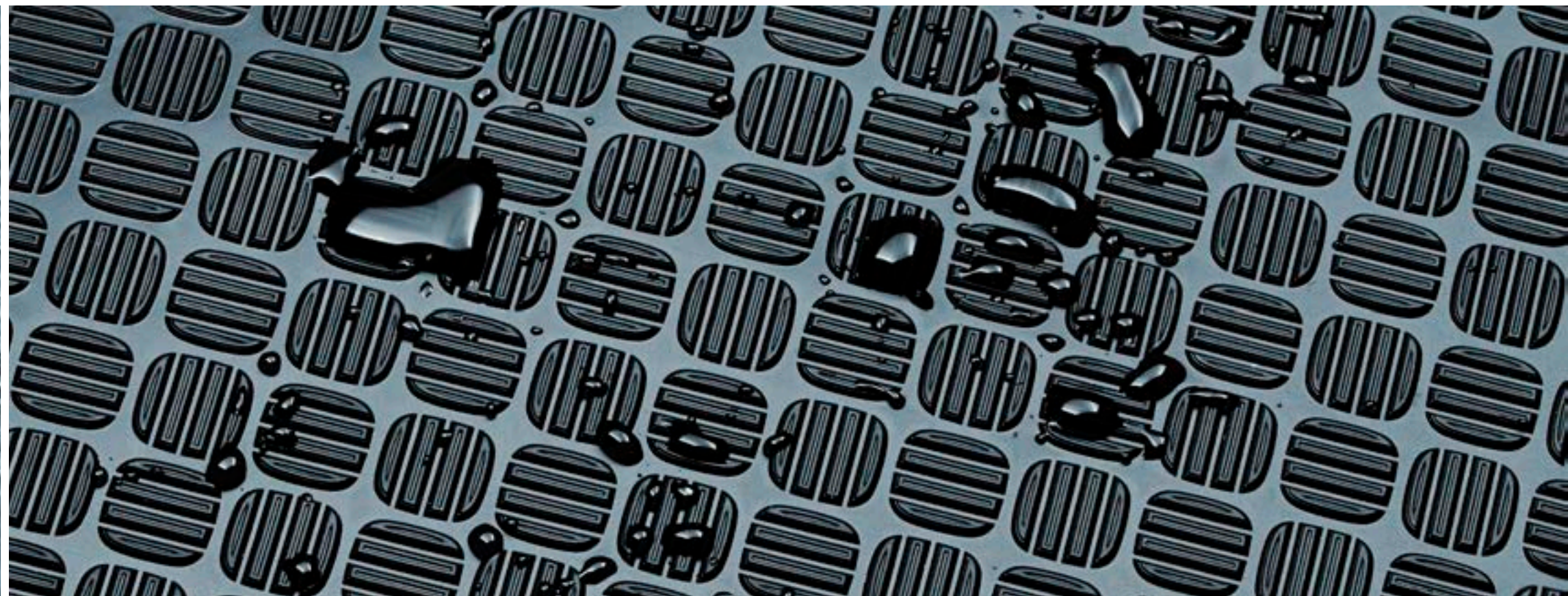
PRACTICALITY

TECHNOLOGY

PERSONALISATION

HARD-WEARING RUBBER FLOORING

Defender's Durable Rubber Flooring is ready for anything - anything - you want to throw at it. Incredibly tough and, thanks in part to flush door sills, easy to clean, it features a chequer finisher which adds greatly to the compelling cabin design. Go on. Get out there. Get it dirty.



DESIGN

ACCESSORY PACKS

CAPABILITY

PRACTICALITY

TECHNOLOGY

PERSONALISATION

ACCESSORY PACKS

HELP ME CHOOSE

Our four accessory packs have been created to suit your needs. To suit your lifestyle. Enhancing the vehicle's capability and toughness even further. So, whether you're exploring the rugged outback or conquering the commute, you can go your own way.



EXPLORER PACK

Blaze your own trail, whatever the terrain. Explorer Pack* equips Defender to defy conventions and conquer the most uncharted landscapes.

*Not available on V8 models.

Vehicle shown is Defender 110 HSE in Hakuba Silver.

Accessories shown: Explorer Pack with Front Expedition Protection System, Fixed Side Steps, and Deployable Roof Ladder upgrades.



DESIGN

ACCESSORY PACKS

CAPABILITY

PRACTICALITY

TECHNOLOGY

PERSONALISATION

EXPLORER PACK

CONSISTS OF:

Raised Air Intake is ideal for dusty and sandy conditions.

Expedition Roof Rack¹ has a lightweight, fully integrated design, providing a dynamic load capacity of up to 132kg².

The 24 litre **Exterior Side-mounted Gear Carrier**¹ is easy to access, lockable and waterproof. It's perfect for carrying items such as walking boots or wetsuits.

Matte Black Bonnet Decal enhances the bonnet's appearance and includes a '90' or '110' cut-out detail.

Wheel Arch Protection provides additional protection when driving off-road.

¹Roof Rails required for fitment. ²Defender 110 with off-road tyres.



Front and Rear Classic Mudflaps retain the heritage of Land Rover Defender while protecting the paintwork.

Spare Wheel Cover protects the rear-mounted spare wheel.

UPGRADES

Front Expedition Protection System provides robust protection to the front of the vehicle and the raised corners improve the front approach angle.

Improving access to the roof, the **Deployable Roof Ladder**¹ makes stowing your belongings easier. For added security, the ladder can be locked in the stowed position.

Fixed or Deployable Side Steps aid access into the vehicle. Deployable Side Steps² automatically deploy as the doors are opened.

Bright Side Tubes³ enhance the side of the vehicle whilst providing protection to the door sides during off-road driving.

The **Loadspace Rubber Mat**⁴ is waterproof with a non-slip surface and helps protect the rear loadspace floor from general dirt, while **Deep-sided Rubber Mats** provide the ultimate in footwell protection.



¹Roof Rails required for fitment.

²Available for Defender 110 only. Not compatible with Fixed Side Steps or Bright Side Tubes.

³Not compatible with Fixed Side Steps or Deployable Side Steps.

⁴Not available with PHEV.



DESIGN

ACCESSORY PACKS

CAPABILITY

PRACTICALITY

TECHNOLOGY

PERSONALISATION

ADVENTURE PACK

Take your passions to new territories. Adventure Pack* equips Defender to take you off the beaten track and into nature's playground.

*Not available on V8 models.

Vehicle shown is Defender 90 SE in Pangea Green.

Accessories shown: Adventure Pack with Fixed Side Steps and 'A' Frame Protection Bar upgrades. Front Undershield also shown.



DESIGN

ACCESSORY PACKS

CAPABILITY

PRACTICALITY

TECHNOLOGY

PERSONALISATION

ADVENTURE PACK

CONSISTS OF:

Clean your equipment easily with the 6.5 litre pressurised **Portable Rinse System**. Including a hose and shower attachment, it can be used to rinse boots, bikes and wetsuits.

Secured to the rear seat, keep all of your essential items at hand, yet neatly out of sight. Easily removable, the versatile 20 litre **Seat Backpack** can also be taken with you when you leave the vehicle.

Bright Rear Scuff Plate protects the rear bumper from scratches and scuffs while loading the vehicle.

Front and Rear Mudflaps add to the design of the vehicle and protect the paintwork from dirt and debris.

Spare Wheel Cover protects the rear-mounted spare wheel.



The **Integrated Air Compressor**¹ is fitted in the loadspace and can be used to inflate vehicle tyres, bike tyres, airbeds and other inflatable items.

The 24-litre **Exterior Side-mounted Gear Carrier**² is easy to access, lockable and waterproof. It's perfect for carrying items such as walking boots or wetsuits.

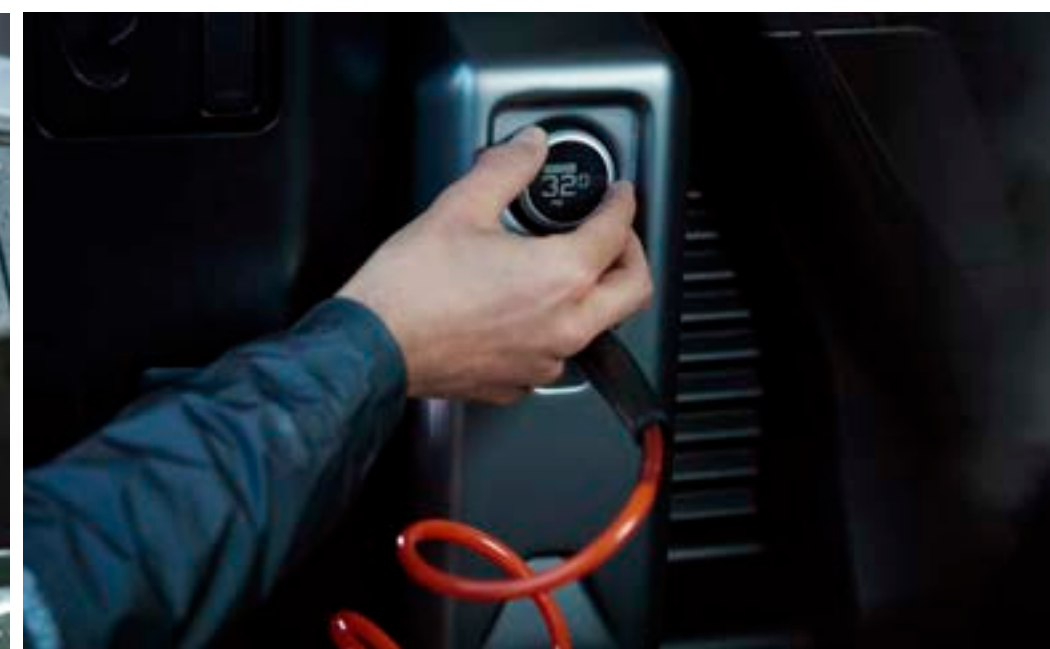
UPGRADES

The **'A' Frame Protection Bar** increases protection against damage to Defender's front, as well as enhancing the vehicle's appearance.

Fixed or Deployable Side Steps aid access into the vehicle. Deployable Side Steps³ automatically deploy as the doors are opened.

Bright Side Tubes⁴ enhance the side of the vehicle whilst providing protection to the door sides during off-road driving.

The **Loadspace Rubber Mat**¹ is waterproof with a non-slip surface and helps protect the rear loadspace floor from general dirt, while **Deep-sided Rubber Mats** provide the ultimate in footwell protection.



¹Not available with PHEV. ²Roof Rails required for fitment. ³Available for Defender 110 only. Not compatible with Fixed Side Steps or Bright Side Tubes. ⁴Not compatible with Fixed Side Steps or Deployable Side Steps. Vehicle is shown with Front Undershield and Cross Bars.



DESIGN

ACCESSORY PACKS

CAPABILITY

PRACTICALITY

TECHNOLOGY

PERSONALISATION

COUNTRY PACK

Bring the muddiest of boots. Country Pack equips Defender to embrace the elements and make every journey truly memorable.

Vehicle shown is Defender 110 HSE in Hakuba Silver.
Accessories shown: Country Pack with Deployable Side Steps and 'A' Frame Protection Bar upgrades.



DESIGN

ACCESSORY PACKS

CAPABILITY

PRACTICALITY

TECHNOLOGY

PERSONALISATION

COUNTRY PACK

CONSISTS OF:

Front and Rear Classic Mudflaps retain the heritage of Land Rover Defender while protecting the paintwork.

Full Height Loadspace Partition* prevents items stored in the rear loadspace from passing into the cabin.

Clean your equipment easily with the 6.5 litre pressurised **Portable Rinse System**. Including a hose and shower attachment, it can be used to rinse boots, bikes and wetsuits.

Bright Rear Scuff Plate protects the rear bumper from scratches and scuffs while loading the vehicle.

Wheel Arch Protection provides additional protection when driving off-road.

*Not available with PHEV.



UPGRADES

Fixed or Deployable Side Steps aid access into the vehicle. Deployable Side Steps¹ automatically deploy as the doors are opened.

Bright Side Tubes² enhance the side of the vehicle whilst providing protection to the door sides during off-road driving.

The **'A' Frame Protection Bar** increases protection against damage to Defender's front, as well as enhancing the vehicle's appearance.

The **Loadspace Rubber Mat**³ is waterproof with a non-slip surface and helps protect the rear loadspace floor from general dirt, while **Deep-sided Rubber Mats** provide the ultimate in footwell protection.

¹Available for Defender 110 only. Not compatible with Fixed Side Steps or Bright Side Tubes.

²Not compatible with Fixed Side Steps or Deployable Side Steps.

³Not available with PHEV.



URBAN PACK

Conquer the concrete jungle. Urban Pack equips Defender to stand out in the suburbs with head-turning style, confidence and composure.

Vehicle shown is Defender 90 SE in Pangea Green with optional Satin Protective Film and 22" Style 5098, 5 spoke, Gloss Black wheels. Accessories shown: Urban Pack with Bright Side Tubes upgrade. Front Undershield also shown.



DESIGN

ACCESSORY PACKS

CAPABILITY

PRACTICALITY

TECHNOLOGY

PERSONALISATION

URBAN PACK

CONSISTS OF:

Bright Metal Pedals add to the robust interior.

Bright Rear Scuff Plate protects the rear bumper from scratches and scuffs while loading the vehicle.

Spare Wheel Cover protects the rear-mounted spare wheel.

Front Undershield provides protection to the front lower bumper when driving off-road and allows easy access to the recovery loop.



DESIGN

ACCESSORY PACKS

CAPABILITY

PRACTICALITY

TECHNOLOGY

PERSONALISATION

UPGRADES

20" Style 5095, 5 split-spoke, Gloss Dark Grey wheels.

Fixed or Deployable Side Steps aid access into the vehicle. Deployable Side Steps¹ automatically deploy as the doors are opened.

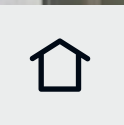
Bright Side Tubes² enhance the side of the vehicle whilst providing protection to the door sides during off-road driving.

The **Loadspace Rubber Mat**³ is waterproof with a non-slip surface and helps protect the rear loadspace floor from general dirt, while **Luxury Carpet Mats** provide stylish footwell protection.

¹Available for Defender 110 only. Not compatible with Fixed Side Steps or Bright Side Tubes.

²Not compatible with Fixed Side Steps or Deployable Side Steps.

³Not available with PHEV.



DESIGN

ACCESSORY PACKS

CAPABILITY

PRACTICALITY

TECHNOLOGY

PERSONALISATION

FIT FOR PURPOSE. NO MATTER WHAT

We set out to create something that would stand the test of time.
To do that, we left nothing to chance.



DESIGN

ACCESSORY PACKS

CAPABILITY

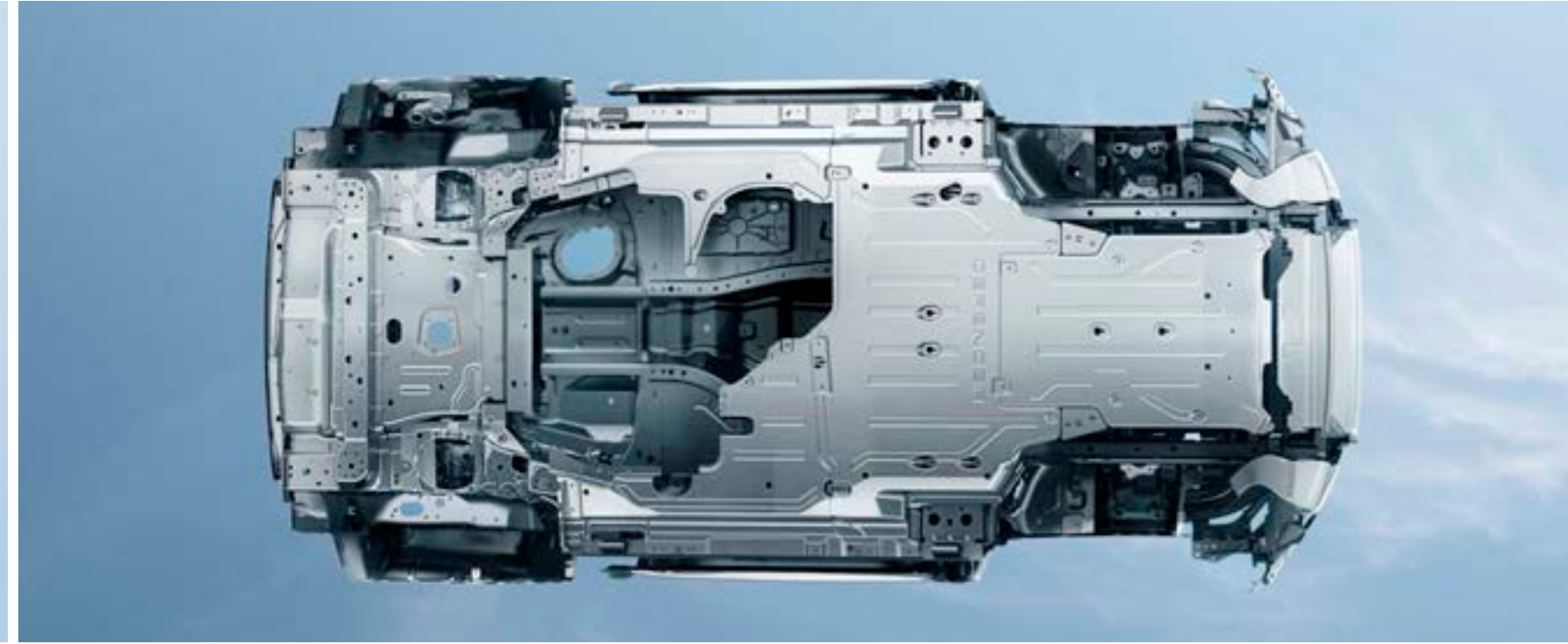
PRACTICALITY

TECHNOLOGY

PERSONALISATION


MONOCOQUE ARCHITECTURE

Unique monocoque architecture contributes to Defender being the toughest and strongest vehicle we have ever created. It has triple the torsional rigidity of a body-on-frame design. Whilst being lightweight, fuel-efficient and engaging to drive.



TESTED TO THE EXTREME

1,2 million kilometres of on and off-road drives. 45.000 individual tests. From +50 to -40 degrees. Crossing the dunes of Dubai to sweeping down the straights of the Nürburgring. We've conducted altitude tests, drenched Defender in 85.000 litres of dyed water in our monsoon facility and engineered its tyres to withstand greater impact. In fact, we've gone to more challenging extremes than ever before to create a vehicle that's capable of great things. This is Defender.

 BUILD YOUR OWN



GO ANYWHERE. DO ANYTHING

Defender has been engineered so you can dream bigger.
Push harder. Go above and beyond.



DESIGN

ACCESSORY PACKS

CAPABILITY

PRACTICALITY

TECHNOLOGY

PERSONALISATION

ALL WHEEL DRIVE (AWD)

Compelling performance. Off and on road. The system intuitively controls the torque distribution between the front and rear axle. On challenging surfaces, such as sand, grass or snow, torque can be balanced between the front and rear wheels to maximise traction. In extreme conditions, where the front or rear wheels lose traction, 100 percent of engine torque can be distributed to the opposite axle for optimum grip. Our Intelligent AWD System* takes this even further by allowing variable torque distribution, resulting in a more precise and dynamic on-road performance and higher torque capacity - all without sacrificing any of Defender's inherent off-road capability. Plus, it delivers enhanced fuel economy and reduced CO₂ emissions. It's your world. Take command.

TWIN-SPEED TRANSFER BOX

An additional set of lower gears can prove invaluable in challenging conditions such as steep inclines or declines, off-road driving or when towing.

*D200, D250 and D300 6-cylinder Diesels only. Market dependent.

Vehicle is shown with accessory Front Expedition Protection System. It improves off-road capability by increasing the front approach angle.



DESIGN

ACCESSORY PACKS

CAPABILITY

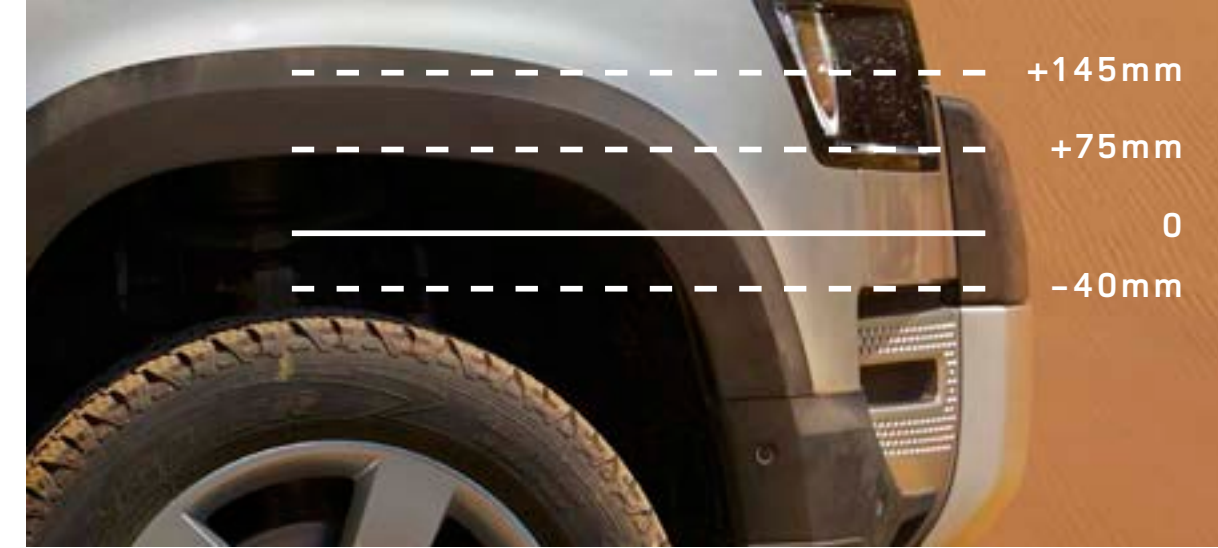
PRACTICALITY

TECHNOLOGY

PERSONALISATION

COIL SUSPENSION AND ELECTRONIC AIR SUSPENSION

The coil sprung suspension system combines double wishbones at the front with an advanced multi-link rear suspension, to create an agile and responsive chassis. A comfortable and capable drive is ensured by Electronic Air Suspension*. Select from an access height of 40mm below normal ride height, to an extended height of up to 75mm. For extreme off-road conditions, a further extended ride height of 70mm is available. Even across unsteady surfaces it provides exceptional wheel articulation and poise.



*Only available as part of a pack. Model dependent.

ELECTRONIC ACTIVE DIFFERENTIAL

On or off-road. In ice, rain or snow. The optional Electronic Active Differential* ensures the greatest level of traction. It does so by controlling the slip between the left and right wheels on the rear axle, helping to deliver effortless capability. Not only that, it's far more effective than brakes when traction is lost, reacting much faster and with a smoother response.

*Model dependent.

Vehicle shown is Defender 110 X in Gondwana Stone with optional features fitted.



DESIGN

ACCESSORY PACKS

CAPABILITY

PRACTICALITY

TECHNOLOGY

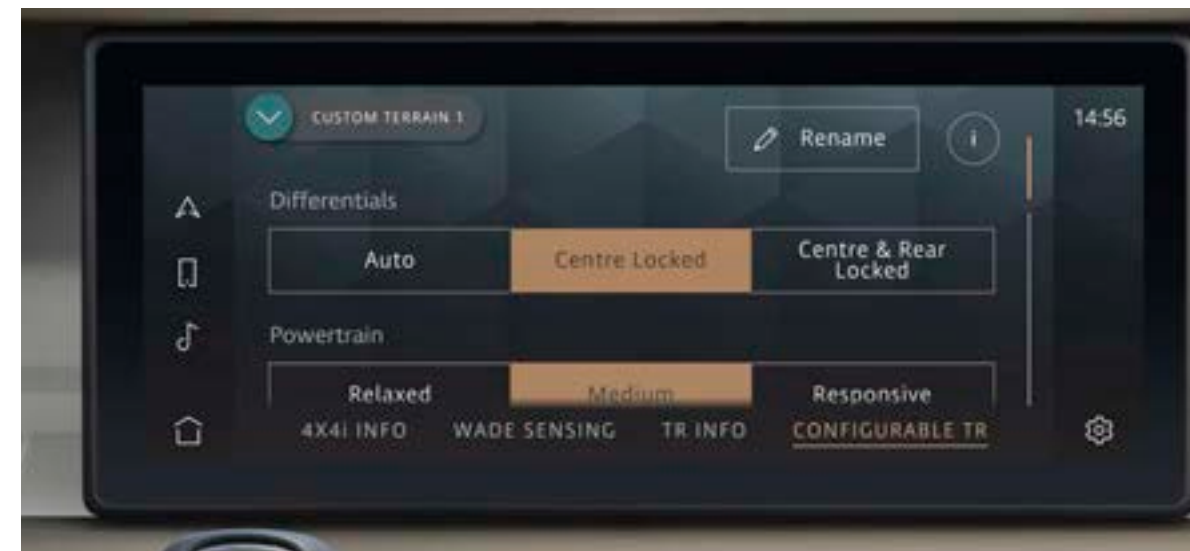
PERSONALISATION



CONFIGURABLE TERRAIN RESPONSE*

Thanks to a world-first in Terrain Response, you can now individually configure Defender's powertrain, steering, differentials and traction control settings. This means you can go beyond - be it the Siberian tundra, or rock crawling in Moab. So, get behind the wheel and discover what you're truly capable of.

*Only available as part of a pack. Model dependent.



DESIGN

ACCESSORY PACKS

CAPABILITY

PRACTICALITY

TECHNOLOGY

PERSONALISATION







TERRAIN RESPONSE 2

This vehicle is for those who aren't afraid to get out and live the way they want to live. Our unique Terrain Response systems enable the driver to optimise the vehicle's engine, gearbox, centre differential and chassis systems to match the demands of the terrain.

The optional Terrain Response 2* takes the capabilities of our award-winning system to a new level. It features an automatic setting which monitors the terrain and systematically selects the most suitable setting.

*Only available as part of a pack. Model dependent.



-  General Driving
-  Grass, Gravel, Snow
-  Mud and Ruts
-  Sand
-  **Rock Crawl**
-  Wade

TERRAIN RESPONSE 2 DYNAMIC PROGRAM

Exclusive to Defender V8, Terrain Response 2's Dynamic Program provides added precision to Defender's off- and on-road capability. This means even tighter body control with flatter handling and sharper responses. The engine, gearbox response, steering weighting and V8 powertrain are all tuned by Dynamic Program. This has been specifically designed to optimise performance on low friction surfaces such as tarmac, sand and dirt roads.

Vehicle shown is Defender 110 V8 in Carpathian Grey.



DESIGN

ACCESSORY PACKS

CAPABILITY

PRACTICALITY

TECHNOLOGY

PERSONALISATION



HILL DESCENT CONTROL

Difficult slopes? You needn't worry. Hill Descent Control (HDC) assists you with tricky descents by maintaining a constant speed and applying braking separately to each wheel. Hill Launch Assist ensures the vehicle doesn't roll backwards as it pulls away on an incline. The vehicle also utilises Gradient Release Control, which is designed to prevent the vehicle accelerating too quickly on a steep incline when the driver releases the brake.

ALL TERRAIN PROGRESS CONTROL (ATPC)

All Terrain Progress Control (ATPC) is a state-of-the-art optional system*. It enables you to set and maintain a steady speed in challenging conditions such as slippery surfaces, including mud, wet grass, ice, snow and dirt roads. Operating like a conventional cruise control system, it functions between 1,8km/h and 30km/h, enabling you to maintain full concentration on the terrain ahead.

*Only available as part of a pack. Model dependent.



DESIGN

ACCESSORY PACKS

CAPABILITY

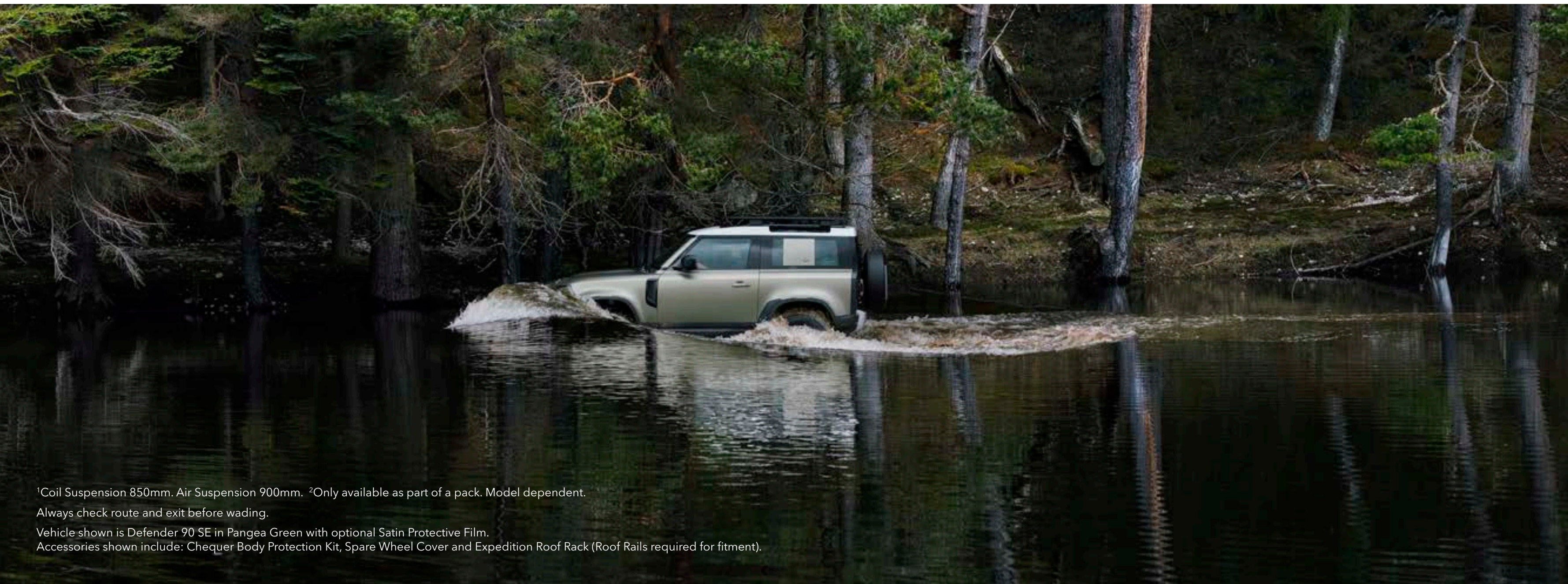
PRACTICALITY

TECHNOLOGY

PERSONALISATION

WADING

Life has a habit of throwing unexpected challenges our way. That's why Defender has a wading depth of 900mm¹, so crossing water need not be one of them. The Wade Program in Terrain Response raises the vehicle using Electronic Air Suspension², while Wade Sensing uses ultrasonic sensors in the door mirrors to visually and audibly alert you if the water approaches the vehicle's maximum wading depth.



¹Coil Suspension 850mm. Air Suspension 900mm. ²Only available as part of a pack. Model dependent.

Always check route and exit before wading.

Vehicle shown is Defender 90 SE in Pangea Green with optional Satin Protective Film.

Accessories shown include: Chequer Body Protection Kit, Spare Wheel Cover and Expedition Roof Rack (Roof Rails required for fitment).



DESIGN

ACCESSORY PACKS

CAPABILITY

PRACTICALITY

TECHNOLOGY

PERSONALISATION

TOWING

Whatever you take. Wherever it is you decide to go. Defender's 3,500kg¹ towing capability means it can readily respond to the most challenging demands. Combined with this is the optional Advanced Tow Assist², which allows you to reverse a trailer while Defender takes care of the counter-steering. The Touchscreen will also display both the current and desired trailer trajectory.

¹Engine dependent. ²Only available as part of a pack. Model dependent.





WINCHING

Pulling power and sheer strength are demonstrated with the Remote Control Electric Winch* accessory. This has a maximum pulling force of 4,536kg and can be operated up to 45 metres away. It's the kind of no-nonsense practicality you need, say, when you're in the middle of the forest. Learn how to check, prepare, maintain and use a winch at one of our Experience Centres.

[BOOK AN EXPERIENCE DAY](#)

*Not compatible with Front Expedition Protection System or 'A' Frame Protection Bar.

Vehicle shown is Defender 90 SE in Pangea Green with optional Satin Protective Film.
Accessories shown: Chequer Body Protection Kit, Expedition Roof Rack (Roof Rails required for fitment), Bright Side Tubes, Remote Control Electric Winch and Winch Mounting Kit.



DESIGN

ACCESSORY PACKS

CAPABILITY

PRACTICALITY

TECHNOLOGY

PERSONALISATION

THE WEIGHT OF YOUR WORLD? NO PROBLEM

You've felt it. That visceral urge to just pack everything up. Get behind the wheel. And go on the ultimate trek. Defender's outstanding carrying capability and payload means you can do just that.

Choose from a range of roof carrying accessories including the Expedition Roof Rack¹ or Aqua Sports Carrier¹.

> EXPLORE ACCESSORIES

STATIC LOAD

Defender's static roof load of up to 300kg lets you make more of your adventure.

ROOF TENT²³

Autohome x Land Rover partnership. If the view is just too good to be missed, stay the night. Contact your nearest Land Rover Retailer for more information.

DYNAMIC LOAD

The dynamic roof load allows for up to 168kg⁴.

¹Linked feature. Not available with V8 models. ²Only available on Defender 110 with Expedition Roof Rack. Not available with V8 models. ³Autohome ladder provided (not shown). ⁴Defender 110 with off-road tyres. Defender V8 models have no dynamic roof loading capacity.

Vehicle shown top is Defender 110 HSE in Hakuba Silver.

Accessories shown: Explorer Pack (Roof Rails required for fitment) with Fixed Side Steps, Deployable Roof Ladder and Front Expedition Protection System upgrades.

Vehicle shown bottom is Defender 90 SE in Pangea Green with optional Satin Protective Film.

Accessories shown: Chequer Body Protection Kit, Expedition Roof Rack (Roof Rails required for fitment), Bright Side Tubes, Remote Control Electric Winch and Winch Mounting Kit.



DESIGN

ACCESSORY PACKS

CAPABILITY

PRACTICALITY

TECHNOLOGY

PERSONALISATION

ADAPTIVE DYNAMICS

Offered with Electronic Air Suspension*, Adaptive Dynamics* makes the distance go by virtually unnoticed. The system monitors vehicle movements up to 500 times a second, reacting to driver or road inputs almost instantaneously to give greater control and minimise body movement, ensuring a composed, flat ride. It even senses off-road conditions, and optimises damping accordingly so you arrive refreshed and relaxed.

*Only available as part of a pack. Model dependent.

Vehicle shown is Defender 90 SE in Pangea Green with optional Satin Protective Film.

Accessories shown: Urban Pack with Bright Side Tubes upgrade and optional 22" Style 5098 5 spoke Gloss Black wheels.

Front Undershield also shown.



DESIGN

ACCESSORY PACKS

CAPABILITY

PRACTICALITY

TECHNOLOGY

PERSONALISATION



DESIGN

ACCESSORY PACKS

CAPABILITY

PRACTICALITY

TECHNOLOGY

PERSONALISATION

GEOMETRY

Outstanding geometry strengthens the vehicle's all-terrain capability. Its approach angle is 37,5 degrees*. This is coupled with a breakover angle of up to 31 degrees and a departure angle of 40 degrees*.

*With Electronic Air Suspension in off-road height and tow eye cover removed. Fitting of side tubes or side steps may affect the off-road capability of the vehicle.

Vehicle shown is Defender 90 SE in Pangea Green with optional Satin Protective Film.



DESIGN

ACCESSORY PACKS

CAPABILITY

PRACTICALITY

TECHNOLOGY

PERSONALISATION

DEFENDER PLUG-IN HYBRID

[BUILD YOUR OWN](#)

Tackle the most challenging conditions and terrains. Efficiently. P400e uses the combination of an advanced 2,0 litre 300PS Si4 Ingenium Petrol engine with an additional 104PS of electric power to deliver a combined output of 404PS.

Vehicle shown is Defender 110 HSE in Fuji White.
Accessories shown: Explorer Pack (Roof Rails required for fitment), with Front Expedition Protection System, Fixed Side Steps, and Deployable Roof Ladder upgrades. Raised Air Intake not shown.



PLUG-IN HYBRID

The electric motor can either supply its power in parallel with the engine or, drive the vehicle in the manually selectable Electric Vehicle (EV) Mode. The large 19.2kWh capacity battery gives the vehicle an all-electric range of up to 53 kilometres (33 miles)* from full charge. So, when you're conquering the urban jungle or tackling those shorter off-road journeys, you do so with zero tailpipe emissions.

PHEV is precise. Uncompromising. It is fully capable of handling off-road situations such as wading and rock crawl. Its on-road performance is equally remarkable, delivering additional power and torque when you need it most through a combination of electric motor and petrol engine. What's more, Defender PHEV has been specially engineered to tackle the toughest terrains, whilst additional technology will moderate the engine temperature, even in the hottest of climates.



UP TO RANGE
53km/33mi*

FROM CO₂
64g/km*

WADING DEPTH
900mm**

MAXIMUM TOWING
3000kg

*The figures provided are NEDC2 calculated from official manufacturer's WLTP tests in accordance with EU legislation with a fully charged battery. For comparison purposes only. Real world figures may differ. CO₂, fuel economy, energy consumption and range figures may vary according to factors such as driving styles, environmental conditions, load, wheel fitment and accessories fitted. NEDC2 are figures calculated using a Government formula from WLTP figures equivalent to what they would have been under the old NEDC test. The correct tax treatment can then be applied. **When fitted with Electronic Air Suspension. 850mm with Coil Suspension.

Off-roading and low range use will substantially affect EV range.

Vehicle shown is Defender 110 SE in Fuji White with optional features fitted.

Accessories shown: Explorer Pack (Roof Rails required for fitment, Bonnet Decal not shown), Remote Control Electric Winch and Winch Mounting Kit with Professional Off-road tyres (Market dependent. Retailer fitment only - Band E).



DESIGN

ACCESSORY PACKS

CAPABILITY

PRACTICALITY

TECHNOLOGY

PERSONALISATION

PETROL AND DIESEL

There is a range of engines available for Defender: D200 and D240 4-cylinder Diesels, D200, D250 and D300 6-cylinder Diesels, a P300 4-cylinder Petrol, P400 6-cylinder Petrol or the new P525 8-cylinder Petrol. Each has been optimised for specific attributes to cater for all needs.

Diesel engines offer better fuel economy over greater distances and produce higher levels of torque at lower engine speeds. This makes them the ideal choice for longer journeys, motorway cruising, towing or off-roading.

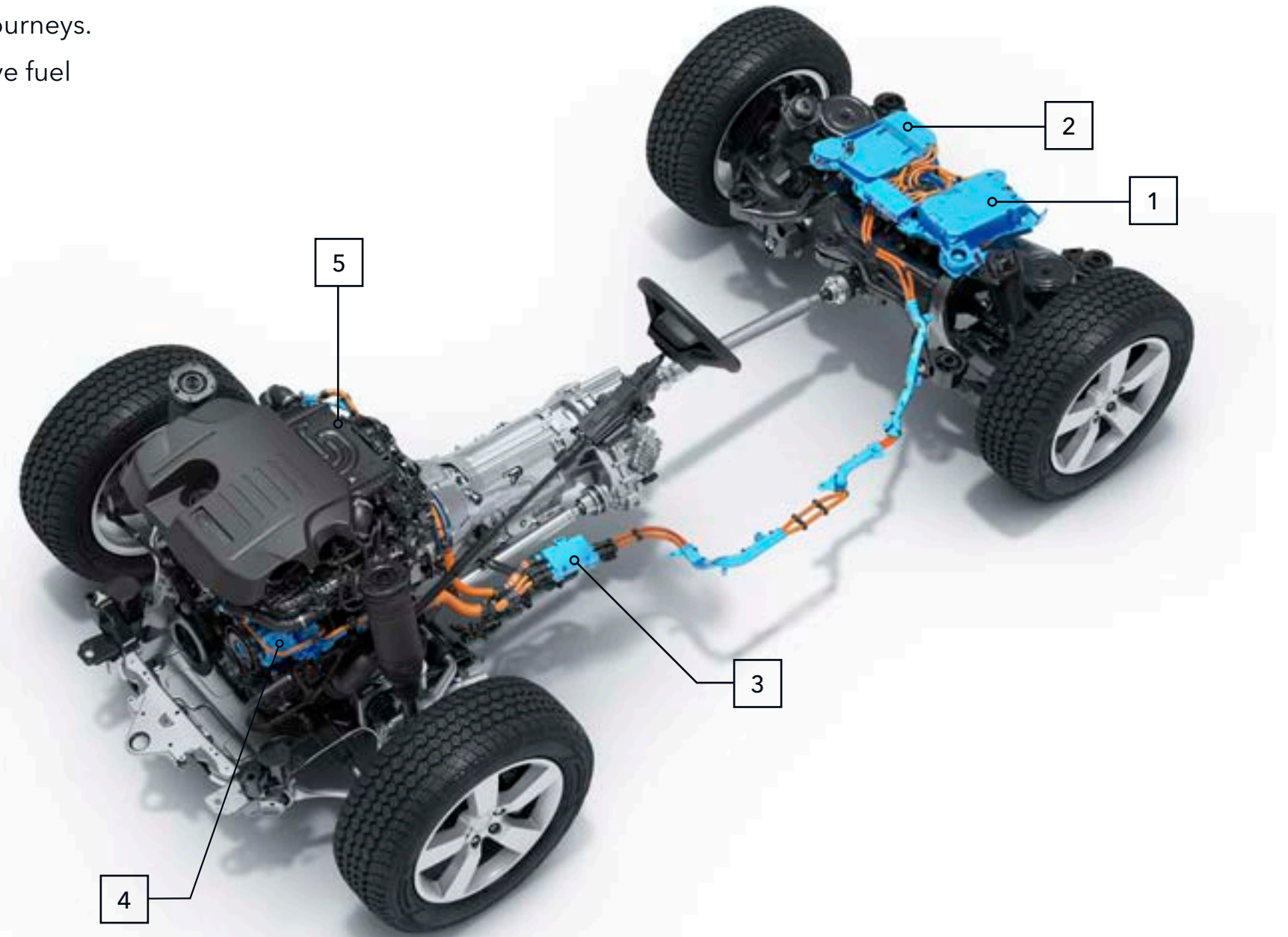
Defender's petrol engines are even more powerful, which can provide a more engaging and direct driving experience. They are even more refined and are better suited to shorter, stop-start journeys.

All engines are equipped with intelligent Stop/Start technology which is designed to improve fuel efficiency and reduce emissions*.

MHEV

Mild Hybrid Electric Vehicle (MHEV)* technology will be fitted to the 6-cylinder D200, D250, D300 and P400 engines. It harvests and stores energy normally lost during vehicle deceleration and intelligently redeploys it to increase the engine's efficiency. This system helps improve fuel economy and boosts the vehicle's performance.

- 1 48V LITHIUM-ION BATTERY
- 2 48V/12V DC-DC CONVERTER
- 3 MEDIUM VOLTAGE JUNCTION BOX
- 4 BELT-DRIVEN INTEGRATED STARTER GENERATOR
- 5 48V ELECTRIC SUPERCHARGER



*Market dependent.

Please refer to the accompanying Technical Specification for full details.



DESIGN

ACCESSORY PACKS

CAPABILITY

PRACTICALITY

TECHNOLOGY

PERSONALISATION

FUNCTIONAL. WHENEVER. WHEREVER

When we set out to create Land Rover Defender, one of our priorities was to make it as practical for you as possible.



DESIGN

ACCESSORY PACKS

CAPABILITY


PRACTICALITY

TECHNOLOGY

PERSONALISATION

CONFIGURABILITY

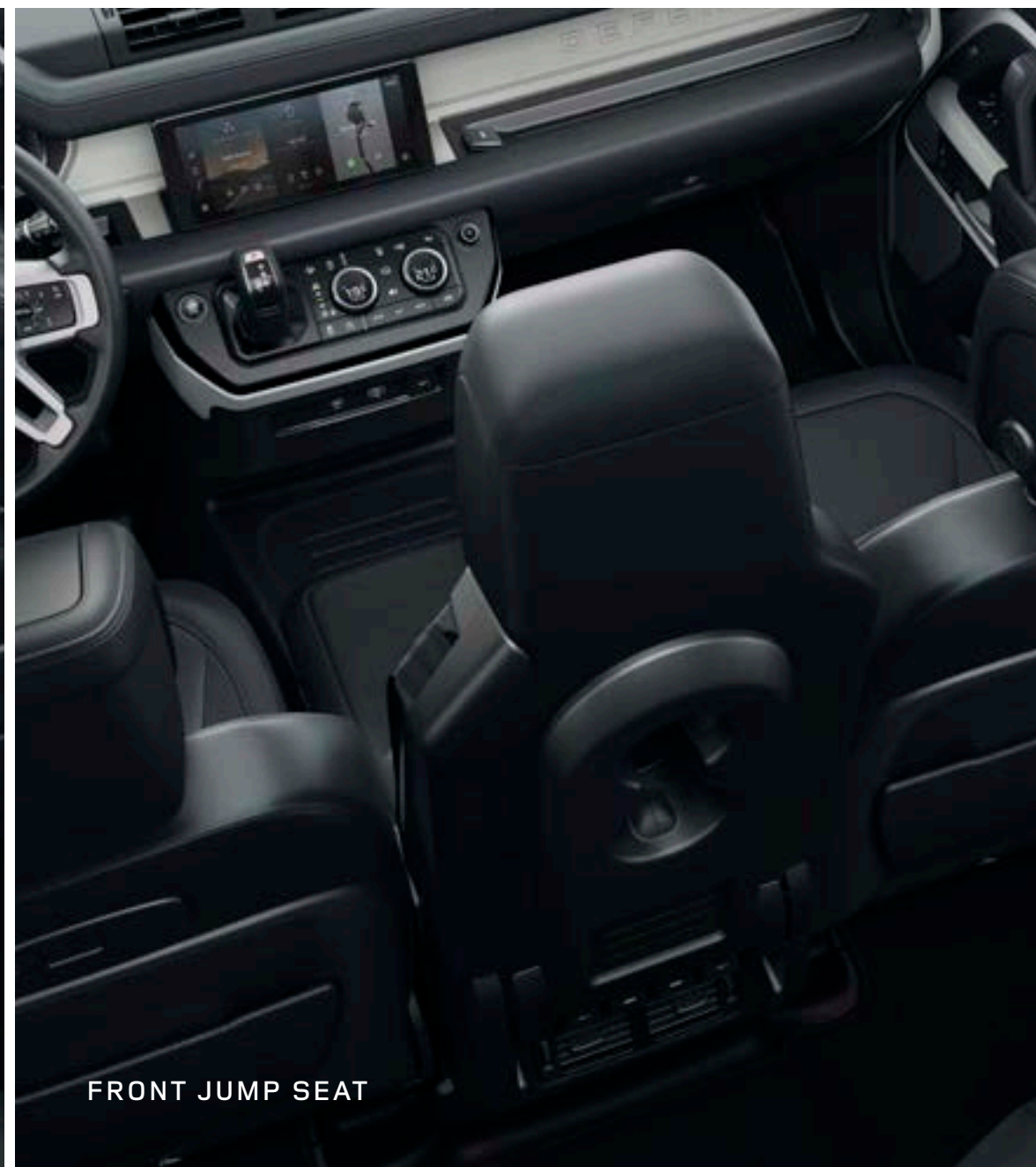
When you build your own Defender, you can get everything you want. You can choose between a cabin walk-through¹ or a front jump seat². Or select a front centre console¹, with or without a refrigerator³. It's the ultimate personalisation. The loadspace capacity provides ample room for all your equipment.

 BUILD YOUR OWN

¹Model dependent. ²Linked feature. ³Only available as part of a pack.



CABIN WALK-THROUGH



FRONT JUMP SEAT



FRONT CENTRE CONSOLE WITH ARMREST



DESIGN

ACCESSORY PACKS

CAPABILITY

PRACTICALITY

TECHNOLOGY

PERSONALISATION

90
2 SEATS WITH CABIN WALK-THROUGH



90
3 SEATS WITH CABIN WALK-THROUGH



90
3 SEATS WITH CENTRE CONSOLE



90
4 SEATS WITH CENTRE CONSOLE



90
5 SEATS WITH FRONT JUMP SEAT (STOWED)



90
6 SEATS WITH FRONT JUMP SEAT



110
2 SEATS WITH CABIN WALK-THROUGH



110
3 SEATS WITH CENTRE CONSOLE



110
4 SEATS WITH CENTRE CONSOLE



110
5 SEATS WITH CENTRE CONSOLE



110
6 SEATS WITH FRONT JUMP SEAT



110
5+2 SEATS





POWER SOCKETS

Optional USB points or 12V power sockets available on every row. A loadspace plug socket¹ mounted in the loadspace side wall, allowing passengers to power multiple devices. It's just another way to ensure you're always connected.

SEAT BACKPACK²

Secured to the rear seat, keep all of your essential items at hand, yet neatly out of sight. Easily removable, the versatile 20 litre Seat Backpack can also be taken with you when you leave the vehicle.

CLICK AND GO SYSTEM

A versatile, multi-purpose system for second-row passengers, with a choice of further attachments that can be added to hold your tablets, bags, laptops and jackets.



¹Only available as part of a pack. ²Optional feature.

Apple® is a registered trademark of Apple Inc., registered in the US and other countries.



DESIGN

ACCESSORY PACKS

CAPABILITY

PRACTICALITY

TECHNOLOGY

PERSONALISATION

TECHNOLOGY

Equipped for 21st century adventures, our most intuitive technologies to date ensure convenience, connectivity and visibility.



Vehicle shown is Defender 110 X in Gondwana Stone with optional features fitted.



DESIGN

ACCESSORY PACKS

CAPABILITY

PRACTICALITY

TECHNOLOGY

PERSONALISATION

SIMPLICITY AS STANDARD

No more endless menus. No more fidgety commands. Pivi Pro*, Land Rover's impressive and seamless in-car infotainment system, enables you to do 80 percent of most tasks with just one or two taps. All on the home screen. Engineered around a smartphone-like interface, it features an intuitive 10" Touchscreen that allows you to go right to what's needed, when you need it. Voice control reacts to a simple wake up phrase such as 'Hello Land Rover'. Plus, you can even connect your smartphone and enjoy your favourite compatible apps.



androidauto

*Connected Navigation will require further subscription after the initial term advised by your Land Rover Retailer.

Compatible smartphones only. Your car is prepared for Apple CarPlay. The services offered by Apple CarPlay depend on feature availability in your country, please see apple.com/uk/ios/feature-availability/#apple-carplay for more information. Your car is prepared for Android Auto. The services offered by Android Auto depends on feature availability in your country, please see android.com/intl/en_uk/auto/ for more information. App Store is a trademark of Apple Inc. Google Play Store is a trademark of Google LLC.

In car features should be used by drivers only when safe to do so. Drivers must ensure they are in full control of the vehicle at all times.

Pivi and InControl features, options, third party services and their availability remain market dependent - check with your Land Rover Retailer for local market availability and full terms. Mobile network connectivity cannot be guaranteed in all locations. Information and images displayed in relation to the InControl technology, including screens or sequences, are subject to software updates, version control and other system/visual changes depending on options selected.



DESIGN

ACCESSORY PACKS

CAPABILITY

PRACTICALITY

TECHNOLOGY

PERSONALISATION

11,4" TOUCHSCREEN

See even more of the relevant information with the optional 11,4" touchscreen. The curved glass interface is 62 percent larger than the standard touchscreen and up to three times brighter. The increased screen real estate shows more of the route ahead when navigating.

Interior shown is Defender 90 V8 with optional 11,4" Pivi Screen fitted.



DESIGN

ACCESSORY PACKS

CAPABILITY

PRACTICALITY

TECHNOLOGY

PERSONALISATION

PREMIUM FUNCTIONALITY

With Pivi Pro¹, you can enjoy fast start-up and even greater connectivity. And, since the Remote App² is also fitted as standard, your Land Rover Defender is always in the palm of your hand. Preset your navigation, confirm your vehicle's location, check fuel levels and set the interior temperature – all before you've opened the car door. Along the way, intelligent re-routing can find you the best path to take, as well as updating parking availability, fuel price comparisons, café locations and traffic hotspots. Intelligent and intuitive, it also learns your regular and favourite routes, so that Smart Voice Guidance can make sure your song won't be interrupted with unnecessary instructions. A 12,3" Interactive Driver's Display is optional³, as is a Head-up Display⁴ which projects key information onto the windscreen in your line of sight, so you can focus on the road ahead.

¹Connected Navigation will require further subscription after the initial term advised by your Land Rover Retailer. ²Remote contains subscription services that can be extended after the initial term advised by your Land Rover Retailer. The Remote App will need to be downloaded from the Apple App Store/Google Play Store. ³Model dependent. ⁴Requires Solar attenuating glass in some markets. Navigation directions on the windscreen only appear when Pivi Pro is fitted to the vehicle.



DESIGN

ACCESSORY PACKS

CAPABILITY

PRACTICALITY

TECHNOLOGY

PERSONALISATION

ENTERTAINMENT FOR ALL

We know how important it is for you to stay connected. With Pivi Pro's Online Pack with Data Plan¹, you can enjoy your favourite music streamed from multiple services, including Spotify, Tunes and Deezer, right through your Land Rover Defender speakers. As passengers, you can all take full advantage of the optional Wi-Fi Enabled with Data Plan², streaming entertainment with up to 20GB of data per month. Whether that's browsing their socials, playing online games, or immersing themselves in a movie.

¹Fair use policy may apply. Standard 1 year subscription, which can be extended after the initial term advised by your Land Rover Retailer. Market dependent. ²Fair use policy applies. After 20GB of data is used within a month, data speeds and functionality on vehicle may reduce for the rest of the month.

For details of the Fair Usage Policy associated with this feature, please refer to the InControl Pivi Pro Terms at [landrover.com/pivi-pro-terms](https://www.landrover.com/pivi-pro-terms). Marked dependent.

Playback time is dependent on streaming provider and the definition of the video content.

HD video will significantly increase data usage.



DESIGN

ACCESSORY PACKS

CAPABILITY

PRACTICALITY

TECHNOLOGY

PERSONALISATION

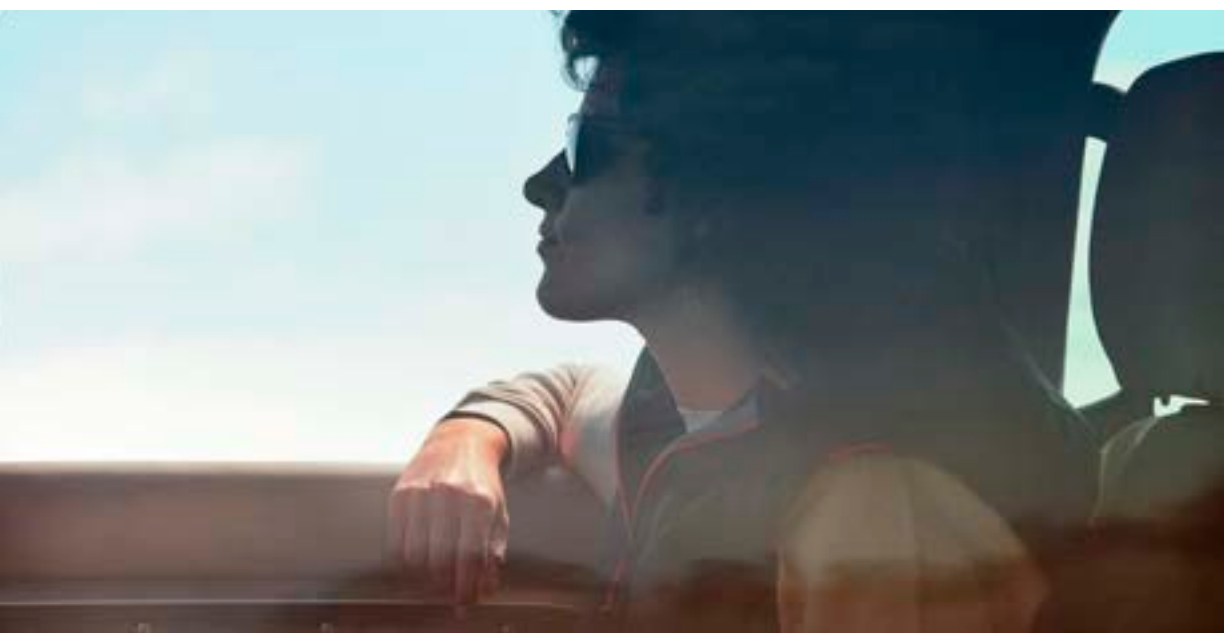
HOW DOES MUSIC MAKE YOU FEEL?

Music has the power to change your mood, evoke memories and affect your wellbeing. It can give you tingles or make you cry. It's why music and cars go so well together. Sitting behind the wheel, listening to your favourite artist, band or composer. It's your space. Your world.

But what if you could do more than simply listen to the music? What if you could feel it, experience it, immerse yourself in it? What if you could make more of a connection with the music and enjoy a greater sense of acoustic involvement in your Land Rover?

British-based Meridian™* Audio are all about the musical experience - the very sense of being there. Their award-winning, precision-engineered audio systems are built on a lifetime of research into psychoacoustics (the science of how the human brain perceives sound) to deliver a performance that is so true to life, you feel every beat, every breath.

*Meridian is a registered trademark of Meridian Audio Ltd. Trifield and the three fields device is a trademark of Trifield Productions Ltd.



DESIGN

ACCESSORY PACKS

CAPABILITY

PRACTICALITY

TECHNOLOGY

PERSONALISATION

WITH MERIDIAN™, YOU'LL FEEL MORE

We're not simply talking about increasing the volume levels. It's more about managing the sound stage; intensifying the levels of depth, clarity and realism of the music by using a combination of advanced acoustic technology and strategically positioned speakers to produce an audio platform that is exactly right for your Land Rover's interior. So wherever you sit in the vehicle - driving seat, passenger seat or rear seat - with a Meridian™ system, you get the same incredible experience.

Each strike of the piano, every guitar pick, horn blast, chorus and melody reveals itself with precision and texture, just as the artist intended. It's intimate, dramatic and very atmospheric - whether you're off-road or stuck in rush-hour traffic.

EXPLORE MERIDIAN™



6 SPEAKERS

1. SOUND SYSTEM

Exceptional acoustics and audio range with high-quality definition through 6 speakers.



10 SPEAKERS 1 SUBWOOFER 400W AMPLIFIER POWER

2. MERIDIAN™ SOUND SYSTEM*

Feel the rhythm of the music with exceptional definition, crystal-clear highs and full, deep bass with this classic audiophile soundstage. Through the careful management of door-mounted speakers placed nearest your seat, you'll enjoy a performance that is incredibly smooth, clean and free of strain.



14 SPEAKERS 1 SUBWOOFER 700W AMPLIFIER POWER

3. MERIDIAN™ SURROUND SOUND SYSTEM*

A truly engaging, thoroughly authentic concert hall experience. Driver and passengers are enveloped in the fullness and clarity of an open, spacious performance through a set of side, front and rear speakers. And it's all seamlessly integrated using Trifield™ technology, so you can sit back and absorb every detail.

*Optional feature, Model dependent. Meridian™ is a registered trademark of Meridian Audio Ltd. Trifield™ and the three fields device is a trademark of Trifield Productions Ltd.

Features and their availability may differ by vehicle specification and market.



DESIGN

ACCESSORY PACKS

CAPABILITY

PRACTICALITY

TECHNOLOGY

PERSONALISATION

BRIGHTER LIGHTS. SAFER NIGHT-TIME DRIVING

Defender features all-round exterior LED lighting as standard. LED lights are designed to last the lifetime of the vehicle and are more fuel-efficient as they use less energy. Premium LED headlights¹ with signature DRL produce a colour of light that is closer to daylight, helping you distinguish objects more easily and reduce driver fatigue. Driving at night or in poor visibility is made easier by Auto High Beam Assist which switches on automatically and dips for oncoming traffic.

MATRIX LED HEADLIGHTS

Matrix LED headlights² with signature DRL enable an Adaptive Driving Beam. By splitting the main beam into vertical strips, the adaptive beam maximises the number of high beam sections for ultimate visibility, while casting a shadow over oncoming traffic to help to prevent dazzling. The adaptive beam is also able to optimise the light distribution to suit the driving conditions of town, country, motorway or bad weather.

¹Linked feature. ²Model dependent.



DESIGN

ACCESSORY PACKS

CAPABILITY

PRACTICALITY

TECHNOLOGY

PERSONALISATION

CLEAR SIGHT GROUND VIEW

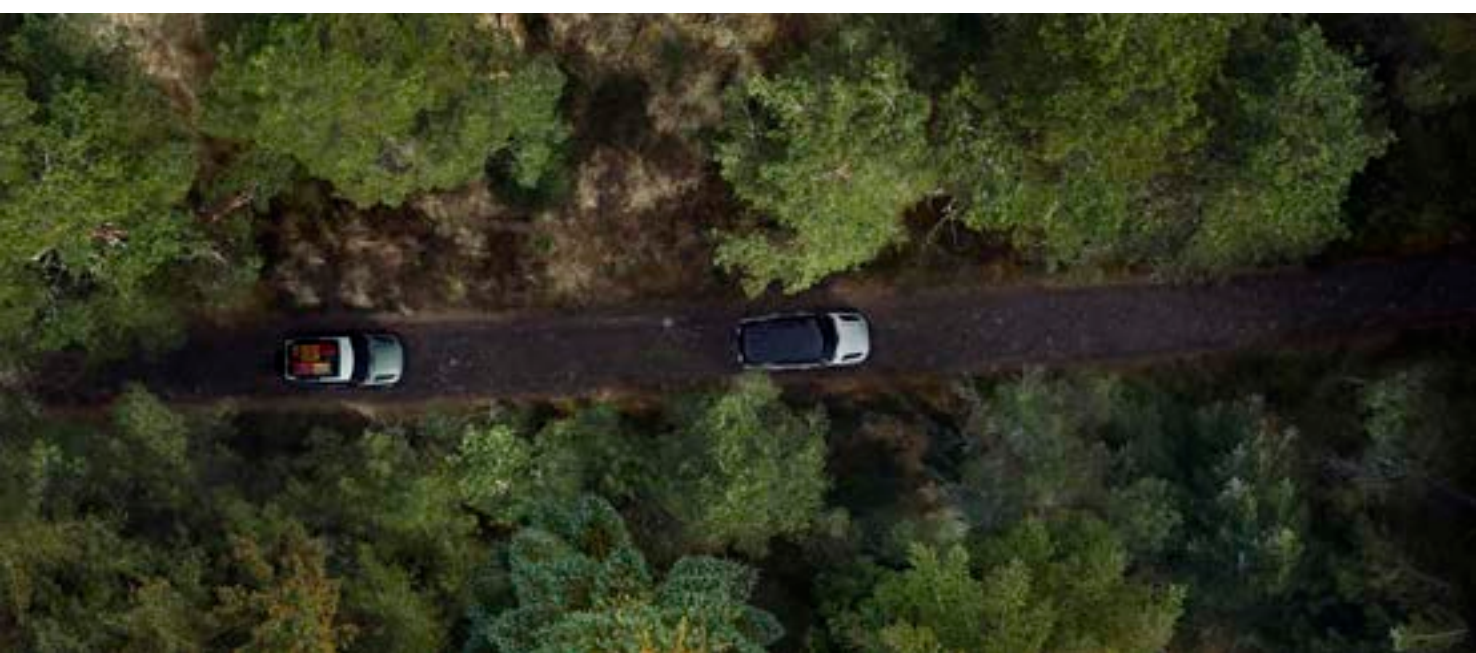
Thick forest terrain. The odd bough and boulder scattered across the muddy track. How do you get through with greater confidence?

Available as part of the 3D Surround Camera system, ClearSight Ground View gives you the added benefit of being able to 'see through' the bonnet - giving you confidence when manoeuvring around any obstacles. Even bollards in the city. This feature displays a camera view of the front underside of the vehicle on the large central Touchscreen - in normal circumstances, this area would be invisible to the driver.

ClearSight Ground View dependent on 3D Surround Camera. Image is not live. Check surroundings for safety. Subject to local regulations.

Vehicle shown is Defender 90 HSE in Pangea Green.
Accessories shown: Adventure Pack (Roof Rails required for fitment) with Fixed Side Steps and 'A' Frame Protection Bar upgrades. Cross Bars also shown.





CLEAR SIGHT INTERIOR REAR VIEW MIRROR

If the boot is piled high with equipment and you can't see a thing through the rear window? No problem. Defender's ClearSight interior rear view mirror* uses a live video feed so you can see the path, or convoy, behind you. This is regardless of equipment or passengers in the back who may be blocking your vision.

*Optional feature. Model dependent. Subject to local regulations. If bifocal or varifocal users cannot easily adjust focus on the ClearSight digital rear view image, they may revert to rear view mirror mode at any time.



DESIGN

ACCESSORY PACKS

CAPABILITY

PRACTICALITY

TECHNOLOGY

PERSONALISATION

SAFETY AND DRIVER ASSISTANCE

Relax. Even in heavy traffic. Land Rover Defender has been built using our advanced technologies and driver assistance features. The more you use them, the more you'll find they don't take over your drive, they simply help take the stress out of it - that's got to be good. All the following are standard:

A comprehensive system of six airbags including driver and passenger airbags, side curtain and thorax airbags to help protect occupants.

Emergency Braking can help to prevent collisions with other vehicles, pedestrians or cycles. It displays a warning in the event of an imminent collision, and automatically applies the brakes if no action is taken.

Cruise Control and Speed Limiter make long distance driving easier. Both features help to maintain the speed of the vehicle, reducing the need to continually use the accelerator pedal.

Lane Keep Assist detects when your vehicle is unintentionally drifting out of lane and will apply a corrective torque to the steering wheel to encourage you to guide your vehicle back.

Driver Condition Monitor detects if you're starting to feel drowsy by monitoring steering inputs, brake and throttle pedal activity to give you an early warning when you need to take a break.

Traffic Sign Recognition and Adaptive Speed Limiter clearly displays speed limits and 'no overtaking' signs on the instrument cluster or optional Head-up Display. When activated, Adaptive Speed Limiter uses Traffic Sign Recognition* to adjust your vehicle's speed accordingly.



*Standard when fitted with Pivi Pro.

Vehicle shown is Defender 90 X-Dynamic HSE in Eiger Grey with optional features fitted.



DESIGN

ACCESSORY PACKS

CAPABILITY

PRACTICALITY

TECHNOLOGY

PERSONALISATION

3D SURROUND CAMERA

3D Surround Camera helps you see more. 3D exterior perspectives alongside a 360° overhead view of your vehicle help you manoeuvre with confidence.

Wade Sensing uses ultrasonic sensors in the door mirrors to provide real-time pictorial information about the water depth when wading. The system lets you know when water levels are near the 900mm* maximum wading depth.

*Coil Suspension 850mm. Air Suspension 900mm.



DESIGN

ACCESSORY PACKS

CAPABILITY

PRACTICALITY

TECHNOLOGY

PERSONALISATION

BLIND SPOT ASSIST PACK (OPTIONAL¹)

The **Blind Spot Assist Pack** helps you to identify and safely respond to potential collisions, so you can feel more confident on any drive.



Clear Exit Monitor helps passengers stay safe as they exit the vehicle by providing an illuminated warning in the door if an approaching hazard is detected, such as passing vehicles and cyclists.



Blind Spot Assist² helps you to change lanes more safely, illuminating a small warning light in the wing mirror if your vehicle detects another vehicle in your blind spot. Additional steering correction encourages you to guide your vehicle away if a potential collision is detected.



Rear Traffic Monitor warns you of vehicles, pedestrians or other hazards approaching from either side. Particularly useful when reversing out of a parking bay.

DRIVER ASSIST PACK (OPTIONAL*)

The **Driver Assist Pack** includes a range of features designed to make driving safer and easier. It includes the features found in the **Blind Spot Assist Pack**, plus:



Rear Collision Monitor can detect if a vehicle approaching from behind is not slowing down and presents a potential collision threat. The system will then attempt to alert the driver to brake by automatically flashing the hazards lights.



Adaptive Cruise Control helps make motorway driving and heavy traffic situations even easier and more comfortable. It achieves this by gently assisting with acceleration and braking to maintain a set distance from vehicles ahead.

¹Model dependent. ²Blind Spot Assist can help prevent collisions. If your vehicle detects another car in your blind spot when you begin to change lanes, a rotational force is automatically applied to the steering wheel - indicating a steering correction should be made.



DESIGN

ACCESSORY PACKS

CAPABILITY

PRACTICALITY

TECHNOLOGY

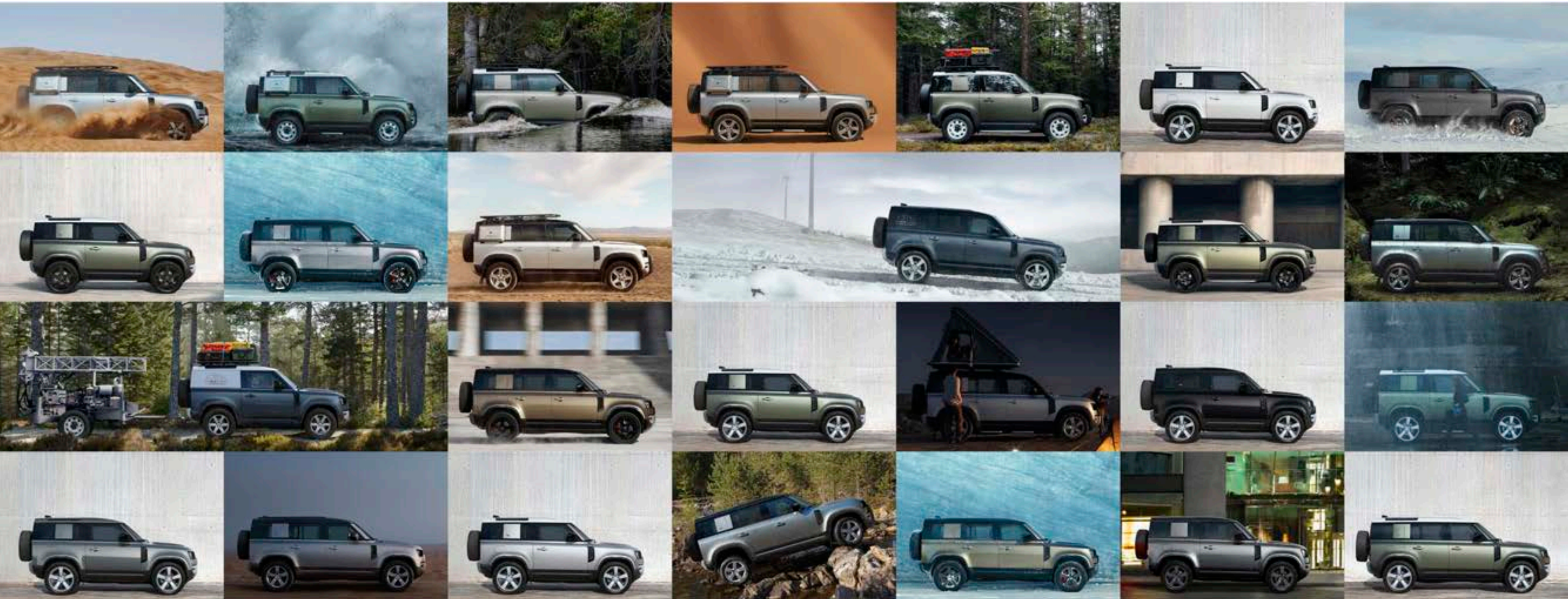
PERSONALISATION

PERSONALISATION

[BUILD YOUR OWN](#)

From a choice of exterior colours to a raft of accessories, Land Rover Defender's the ultimate expression of individuality. Go on. Make it yours.

[EXPLORE ACCESSORIES](#)



DESIGN

ACCESSORY PACKS

CAPABILITY

PRACTICALITY

TECHNOLOGY

PERSONALISATION

CHOOSE YOUR MODEL

DEFENDER

EXPLORE THIS MODEL

Designed. Like no other. Defender is the strongest and most capable vehicle we have ever created. With 18" Style 5093, Gloss White, Steel* wheels and All Wheel Drive, it can tackle anything. And everything.

Model is also available in S, SE and HSE specification packs.

*Engine dependent.



DEFENDER 90



DEFENDER 110

DEFENDER X-DYNAMIC

EXPLORE THIS MODEL

Built for the toughest demands. With incredibly durable Robustec ribbon accenting on the seats, Black exposed rear recovery eyes and tough exterior styling, Defender X-Dynamic is ready for anything.

Model is also available in S and SE specification packs.

Vehicles shown are Defender 90 X-Dynamic HSE and Defender 110 X-Dynamic HSE in Eiger Grey.



DESIGN

ACCESSORY PACKS

CAPABILITY

PRACTICALITY

TECHNOLOGY

PERSONALISATION

DEFENDER XS EDITION

[EXPLORE THIS MODEL](#)

Defender XS Edition is available in Gondwana Stone, Hakuba Silver, Santorini Black or Silicon Silver. This distinctive model features body coloured lower cladding and wheel arches with 20" Style 5095, 5 split-spoke, Gloss Dark Grey with contrast Diamond Turned finish wheels.



DEFENDER 90 XS EDITION



DEFENDER 110 XS EDITION



DESIGN

ACCESSORY PACKS

CAPABILITY

PRACTICALITY

TECHNOLOGY

PERSONALISATION

DEFENDER X

[EXPLORE THIS MODEL](#)

Unstoppable. Anywhere. Defender X combines capability with off-road looks, meaning you can go way beyond where you've ever gone before. Features Configurable Terrain Response 2, Air Suspension, Electronic Active Differential, and unique interior and exterior accents.



DEFENDER 90 X



DEFENDER 110 X



DESIGN

ACCESSORY PACKS

CAPABILITY

PRACTICALITY

TECHNOLOGY

PERSONALISATION

DEFENDER V8

[EXPLORE THIS MODEL](#)

A true driver's car. Defender V8's throttle connection is tuned to maximise off-road control and on-road character. The V8 engine, with 525PS and 625Nm torque, can take you from 0-100km/h in as little as 5,2 seconds (0-60mph in 4,9 seconds) in Defender 90 with a top speed of 240km/h (149mph)*.

*Max speed is 191km/h (119mph) when fitted with 20" wheels.



DEFENDER 90 V8



DEFENDER 110 V8



DESIGN

ACCESSORY PACKS

CAPABILITY

PRACTICALITY

TECHNOLOGY

PERSONALISATION

DEFENDER V8 CARPATHIAN EDITION

EXPLORE THIS MODEL

Defender V8 Carpathian Edition features the same off-road control and on-road character as the Defender V8. The differences lie in the exterior design cues, including the exclusive combination of Carpathian Grey paint and Satin Protective film, along with a Black contrast tail door and contrast bonnet.



DEFENDER 90 V8 CARPATHIAN EDITION



DEFENDER 110 V8 CARPATHIAN EDITION



DESIGN

ACCESSORY PACKS

CAPABILITY

PRACTICALITY

TECHNOLOGY

PERSONALISATION

DEFENDER HARD TOP

EXPLORE THIS MODEL

Take everything you need with you in Defender Hard Top. Featuring a fixed full-height loadspace partition, lashing points and lockable underfloor storage area, your gear will be secure whatever the terrain throws at you.



DEFENDER 90 HARD TOP



DEFENDER 110 HARD TOP



DESIGN

ACCESSORY PACKS

CAPABILITY

PRACTICALITY


TECHNOLOGY

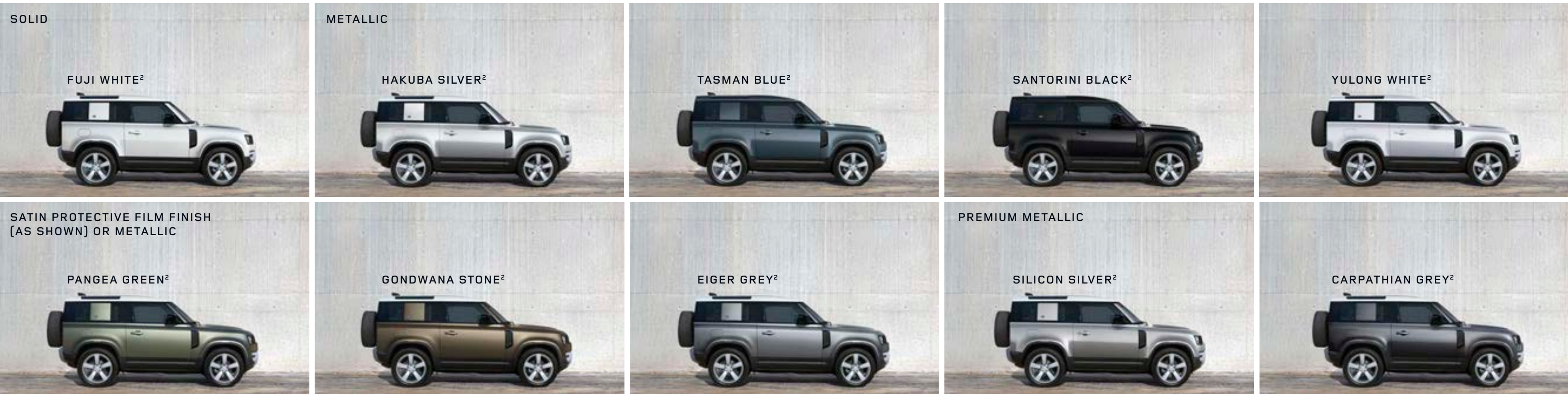
PERSONALISATION

EXTERIOR COLOURS

Defender does take a nod to its origins. Its colours were influenced by earth or supercontinents, including Pangea and Gondwana. There's also Tasman Blue which is a modern reinvention of a heritage Defender colour. An optional Satin Protective Film¹² can also be applied to the vehicle's exterior. Not only does this deliver a rich, Satin finish which is environmentally sustainable, it's also seriously tough. Designed to meet - and surpass - the rigorous requirements of the aerospace industry, to help protect the paint from scratches, damage and even the sun's UV rays.

Configure your Defender online to view the range of paint colours and finishes.

 BUILD YOUR OWN



¹Linked feature with Contrast Roof. ²Model dependent.



DESIGN

ACCESSORY PACKS

CAPABILITY

PRACTICALITY

TECHNOLOGY

PERSONALISATION

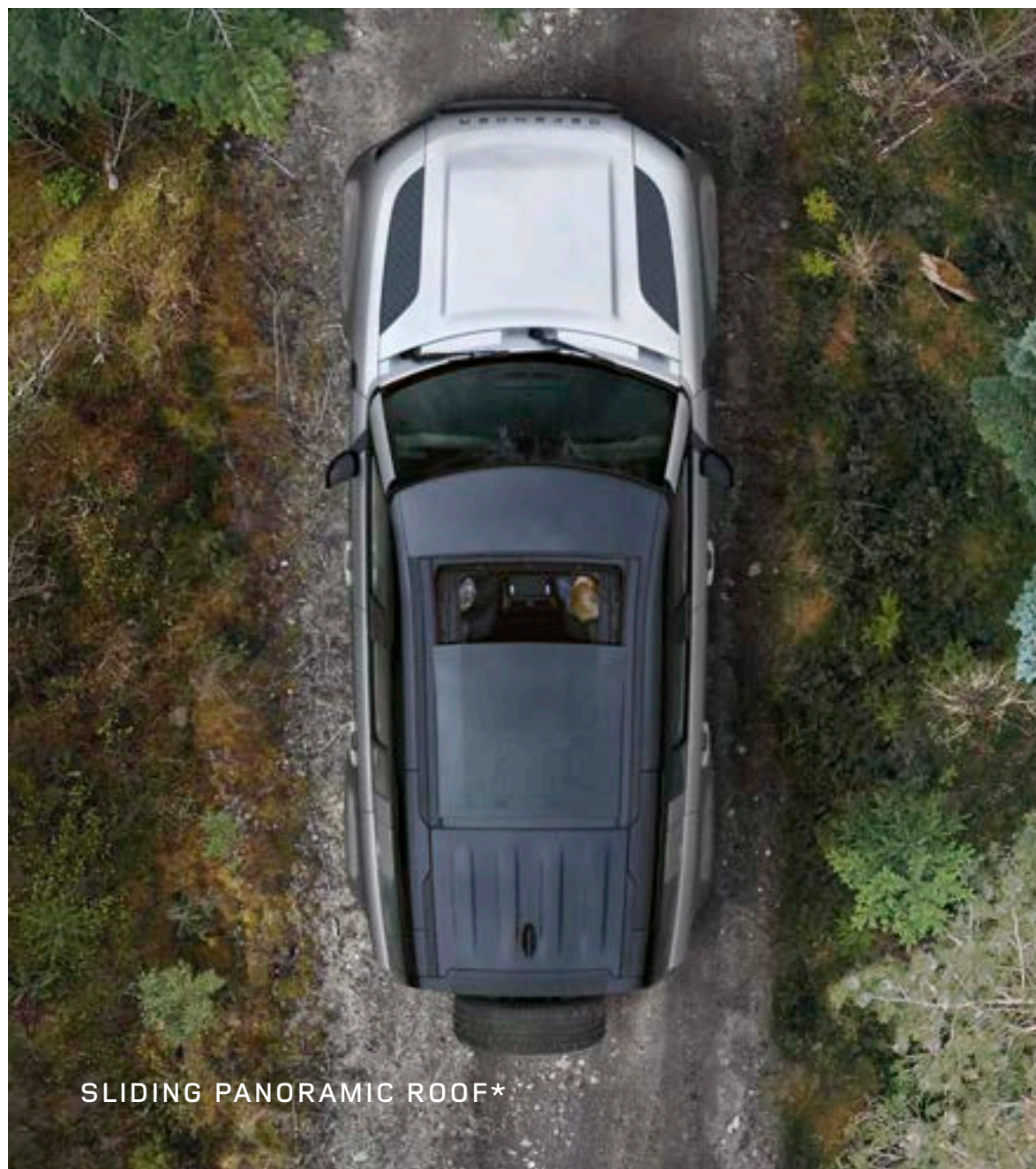
ROOF OPTIONS

When open, the folding fabric roof lets you truly feel part of your surroundings. Closed, it adds to your sense of privacy and protection from the elements. Flooding the interior with natural light, the sliding panoramic roof provides a spacious feel to the interior and a seamless connection to the world outside.

*Model dependent.



FOLDING FABRIC ROOF*



SLIDING PANORAMIC ROOF*



FIXED METAL ROOF



DESIGN

ACCESSORY PACKS

CAPABILITY

PRACTICALITY

TECHNOLOGY

PERSONALISATION

INTERIOR COLOURS

Four interior colourways and a range of six seat materials to choose from.

Not all combinations of colour and seat material shown. Please check availability of colours and current specifications with your Land Rover Retailer.



DESIGN

ACCESSORY PACKS

CAPABILITY

PRACTICALITY

TECHNOLOGY

PERSONALISATION

EBONY/EBONY

Interior shown is Defender 110 with Ebony fabric seats and Ebony interior with cross car beam in Light Grey Powder Coat Brushed finish.



DESIGN

ACCESSORY PACKS

CAPABILITY

PRACTICALITY

TECHNOLOGY

PERSONALISATION

ACORN/LUNAR

Interior shown is Defender 110 SE with Acorn grained leather seats and Lunar interior with cross car beam in Light Grey Powder Coat Brushed finish.

Image shows discontinued Robust Canvas seat facings. For colourway reference only. Please check current specifications with your Land Rover Retailer.



DESIGN

ACCESSORY PACKS

CAPABILITY

PRACTICALITY

TECHNOLOGY

PERSONALISATION

KHAKI/EBONY

Interior shown is Defender 110 SE with Khaki grained leather seats and Ebony interior with cross car beam in Light Grey Powder Coat Brushed finish.

Image shows discontinued Robust Canvas seat facings. For colourway reference only. Please check current specifications with your Land Rover Retailer.



DESIGN

ACCESSORY PACKS

CAPABILITY

PRACTICALITY

TECHNOLOGY

PERSONALISATION

EBONY/EBONY (DEFENDER X-DYNAMIC ONLY)

Interior shown is Defender 110 X-Dynamic HSE with Ebony/Ebony Windsor leather and Robustec seats and Ebony interior with cross car beam in Light Grey Powder Coat Brushed finish.



DESIGN

ACCESSORY PACKS

CAPABILITY

PRACTICALITY

TECHNOLOGY

PERSONALISATION

VINTAGE TAN/EBONY (DEFENDER X ONLY)

Interior shown is Defender 110 X with Vintage Tan/Ebony Windsor leather and Steelcut premium textile seats and Ebony interior with cross car beam in Dark Grey Powder Coat Brushed finish.



DESIGN

ACCESSORY PACKS

CAPABILITY

PRACTICALITY

TECHNOLOGY

PERSONALISATION

EBONY/EBONY (DEFENDER V8 MODELS ONLY)

Interior shown is Defender 110 V8 with Ebony Windsor leather, Dinamica® suedecloth and Robustec seats and Ebony interior with cross car beam in Satin Black Powder Coat Brushed finish.



DESIGN

ACCESSORY PACKS

CAPABILITY

PRACTICALITY

TECHNOLOGY

PERSONALISATION

WHEELS AND TYRES

There's a choice of 14 wheels* across four sizes (18" - 22"), including our 18" White steel wheels. With an 815mm diameter, our toughest and most durable tyre family yet comes as standard.

The full-size spare wheel is mounted on the side-opening rear tailgate. So, it's easily accessible.



*Model dependent.

Wheel shown is 20" Style 5098, 5 Spoke, in Satin Dark Grey.



DESIGN

ACCESSORY PACKS

CAPABILITY

PRACTICALITY

TECHNOLOGY

PERSONALISATION

18" STYLE 5093,
GLOSS WHITE, STEEL



18" STYLE 5094, 5 SPOKE,
SATIN DARK GREY



19" STYLE 6009, 6 SPOKE,
GLOSS SPARKLE SILVER



19" STYLE 6010, 6 SPOKE,
GLOSS SPARKLE SILVER



19" STYLE 6010, 6 SPOKE,
GLOSS BLACK



20" STYLE 5094, 5 SPOKE,
GLOSS SPARKLE SILVER



DESIGN

ACCESSORY PACKS

CAPABILITY

PRACTICALITY

TECHNOLOGY

PERSONALISATION

20" STYLE 5098, 5 SPOKE,
GLOSS SPARKLE SILVER



20" STYLE 5098, 5 SPOKE,
SATIN DARK GREY
Off-road tyres are required if fitted on V8 models.



20" STYLE 5094, 5 SPOKE,
SATIN DARK GREY



20" STYLE 6011, 6 SPOKE, GLOSS BLACK
Only available with all-season tyres.



20" STYLE 5095, 5 SPLIT-SPOKE,
GLOSS DARK GREY WITH CONTRAST
DIAMOND TURNED FINISH



22" STYLE 5098, 5 SPOKE,
GLOSS SPARKLE SILVER
Only available with all-season tyres.



22" STYLE 5098, 5 SPOKE, GLOSS BLACK
Only available with all-season tyres.



22" STYLE 5098, 5 SPOKE,
SATIN DARK GREY
Only available with all-season tyres.



DESIGN

ACCESSORY PACKS

CAPABILITY

PRACTICALITY

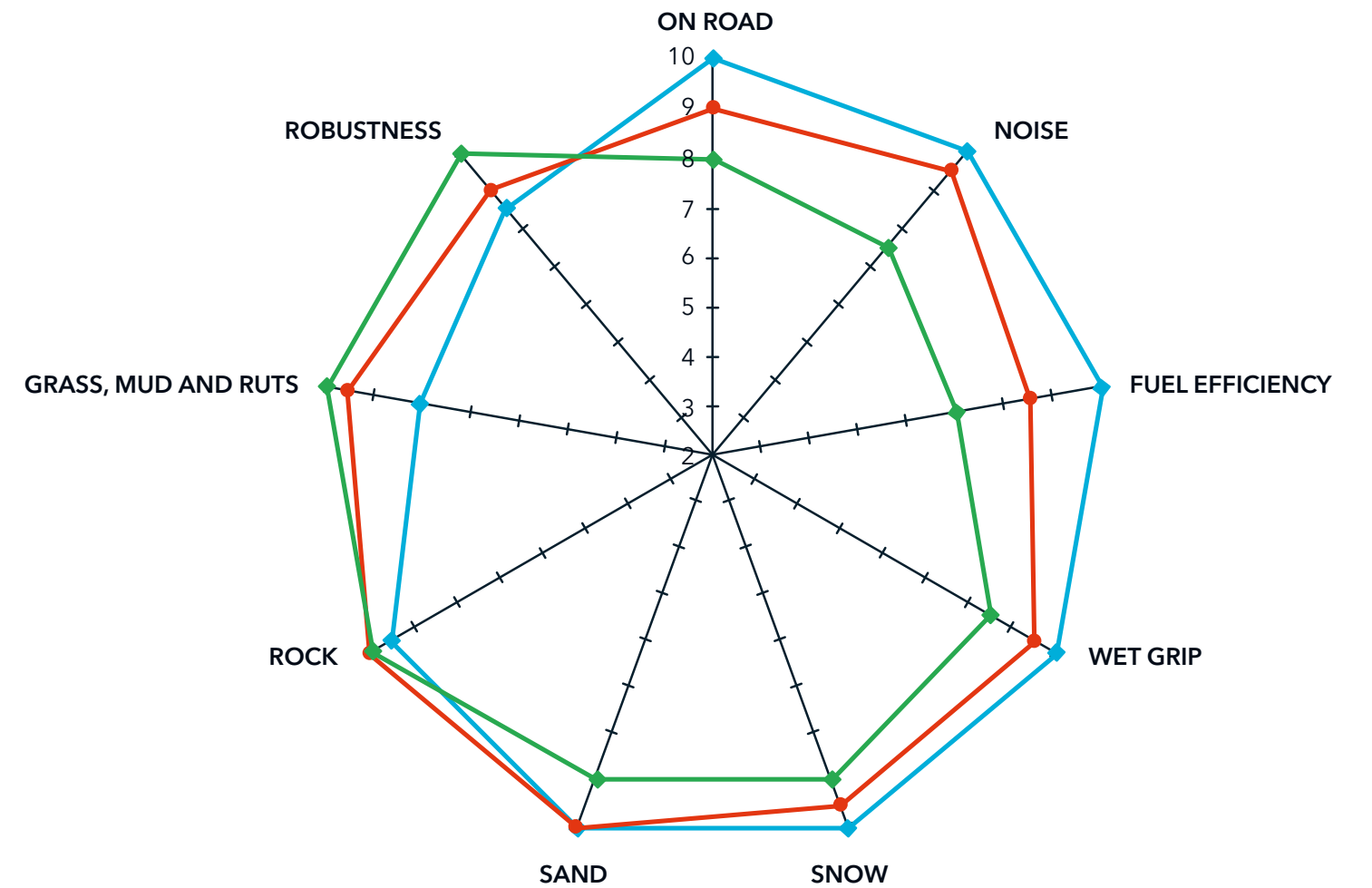
TECHNOLOGY

PERSONALISATION



TYRES

For the toughest demands. The most capable and tough vehicle needs tyres which are just as robust. That's why Land Rover Defender is equipped with 815mm diameter tyres as standard. They improve ground clearance, off-road geometry and traction. An increased sidewall depth also means the vehicle is less prone to punctures and can withstand more damage.



Distance from the centre indicates level of performance - 10 being best.

- All Season (Standard fitment - Band A)
- Off-Road (Option fitment - Band C)
- Professional Off-Road (Market dependent. Retailer fitment only - Band E)



DESIGN

ACCESSORY PACKS

CAPABILITY


PRACTICALITY

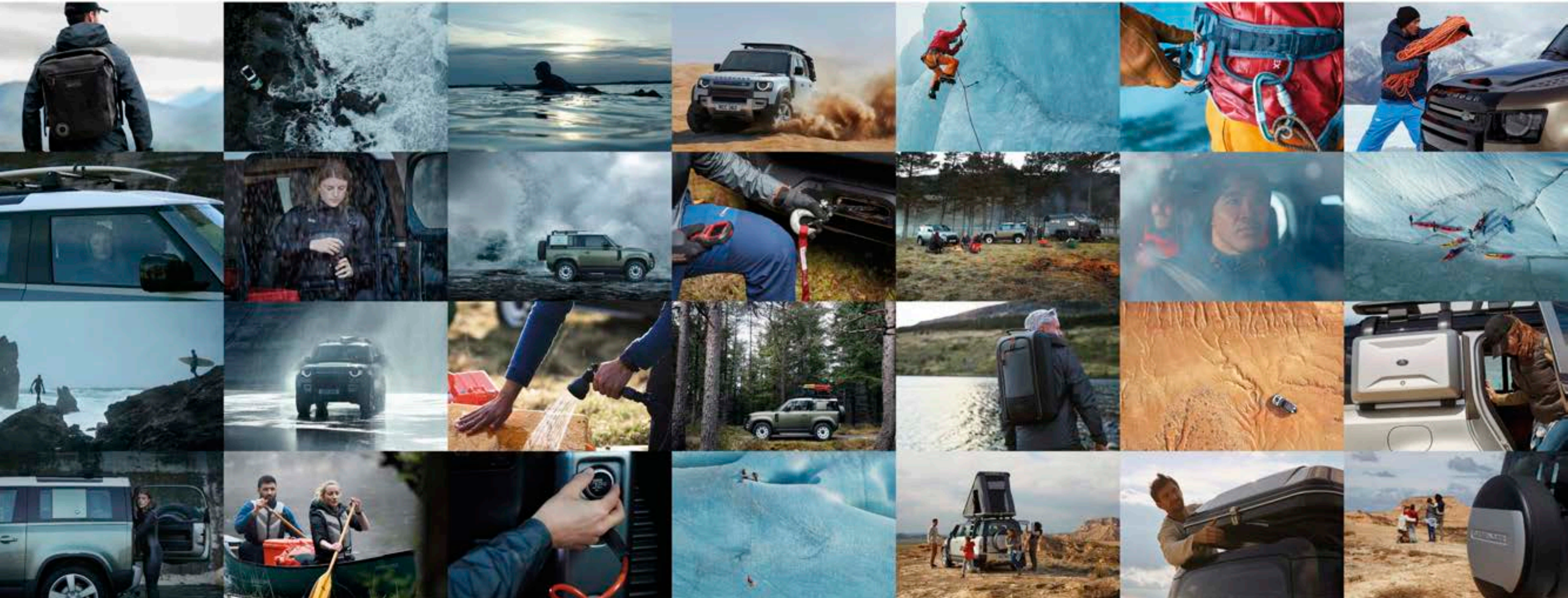
TECHNOLOGY

PERSONALISATION

ACCESSORIES

A world of accessories. Your way.

 BUILD YOUR OWN



DESIGN

ACCESSORY PACKS

CAPABILITY

PRACTICALITY

TECHNOLOGY

PERSONALISATION



Inflatable Waterproof Awning - Can be quickly deployed and fits to either the side or rear of the vehicle.

Chequer Body Protection Kit - Enjoy your adventure without worrying about the paintwork. This kit features additional protection for Defender's exterior.

Deployable Side Steps¹ - These smart, practical steps make it easier to get in and out of the vehicle. Neatly stowed under the sills, the side steps automatically deploy as the door is opened, or when activated by the key fob.

Integrated Air Compressor² - Fitted in the loadspace and can be used to inflate vehicle tyres, bike tyres, airbeds and other inflatable items.

Luxury Carpet Mats - Ebony, deep pile carpet mats with Bright finish Land Rover ingot branding. These durable mats also come fitted with protective rubber backing.

Illuminated Treadplates - The sill treadplates feature an illuminated DEFENDER script to the driver and front passenger side of the vehicle.

Seat Covers - Easily fitted and can be wiped clean. Help to protect seats from mud, dirt and wear and tear.



¹Defender 110 only.

²Not available with PHEV.



DESIGN

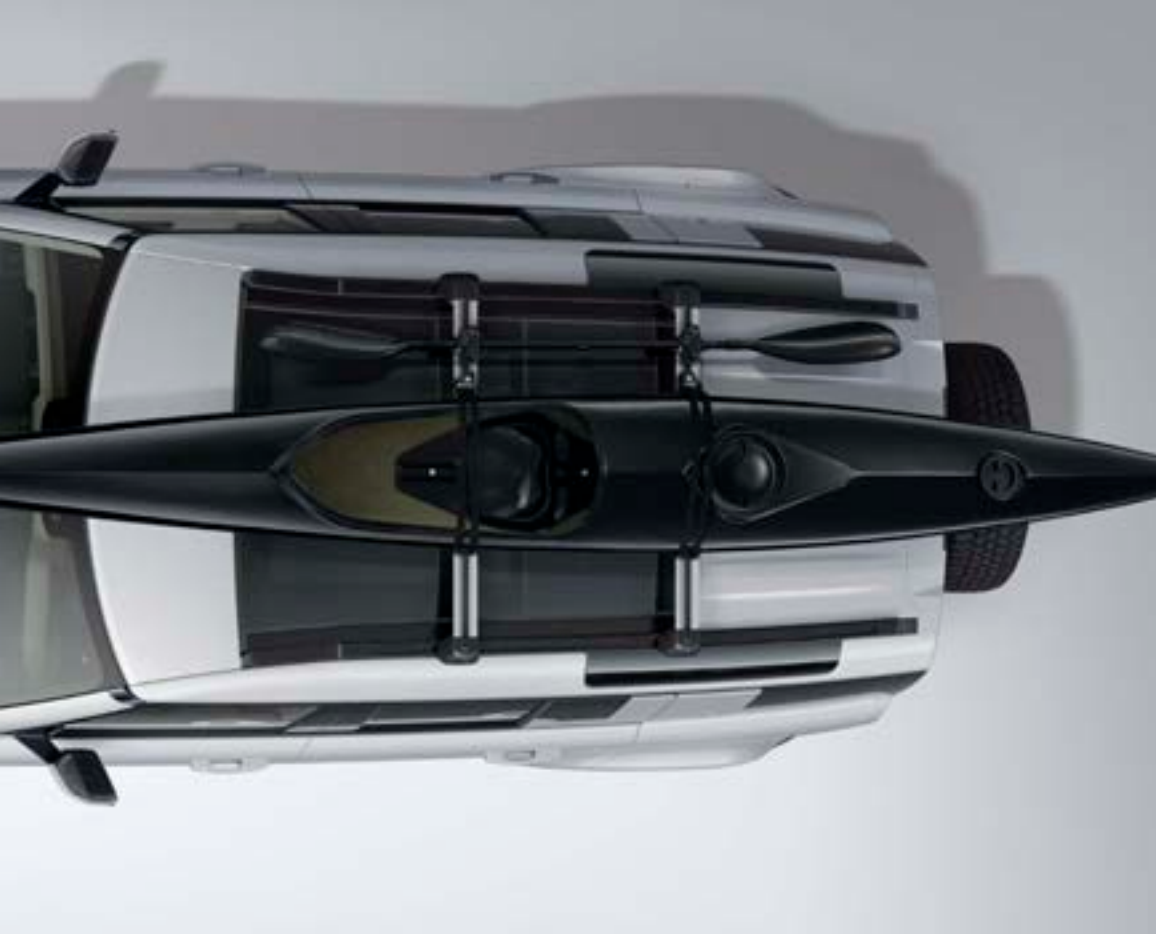
ACCESSORY PACKS

CAPABILITY

PRACTICALITY

TECHNOLOGY

PERSONALISATION



Aqua Sports Carrier¹ - Carries a sailboard, canoe or kayak. Includes lockable multi-purpose holder to carry oars or paddles. Tilts to facilitate easy loading/unloading. Features lockable straps and rubber supports to maintain optimum weight distribution whilst protecting the equipment and vehicle from scratches/ scuffs. Maximum load capacity 45kg.

Ski/Snowboard Carrier¹ - Carries four pairs of skis or two snowboards. Incorporates slider rails for easy loading and is also lockable for security. Maximum load capacity 36kg.

Wheel Mounted Bike Carrier¹ - Roof mounted, lockable bike carrier designed for holding a single bike, up to 20kg.

Luggage Roof Box^{1,2} - Power-click quick mounting system with integrated torque indicator for easy and secure fixation with a single-handed grip. Opens from both sides with handles on the lid and inside the box, for convenient fitting, loading and unloading. Integrated base mat for extra secure loading. 410 litre capacity.



¹Requires Roof Rails and Cross Bars. Not available on V8 Models. Defender V8 models have no dynamic roof loading capacity. ²Not compatible with Expedition Roof Rack.



DESIGN

ACCESSORY PACKS

CAPABILITY

PRACTICALITY

TECHNOLOGY

PERSONALISATION

Detachable Tow Bar - Convenient. Easy to use. The Detachable Tow Bar maintains the vehicle's exterior design when removed or when stowed.

Electrically Deployable Tow Bar - Stowed discreetly behind the rear bumper, providing a clean finish. It is designed to deploy/stow in 12 seconds and is operated via a switch in the rear loadspace, or by the infotainment system in the cabin.

Multi-Height Tow Bar - The Multi-height Tow Bar offers three towing height positions which you can swap easily between.



DESIGN

ACCESSORY PACKS

CAPABILITY

PRACTICALITY

TECHNOLOGY

PERSONALISATION

SAFE. COMFORTABLE. EVEN FOR YOUR PETS

Pet Loadspace Protection Pack* - Protect your loadspace from wet and muddy paws. This pack combines the Quilted Loadspace Liner, Full Height Luggage Partition and Spill Resistant Water Bowl.

Pet Transportation Pack* - Effortless. Anywhere. This pack allows you to transport your pets with absolute ease. It combines the Foldable Pet Carrier, Spill Resistant Water Bowl and Loadspace Rubber Mat.

Pet Care and Access Pack* - Ensure your pet has a comfortable and stress-free journey with the Full Height Luggage Partition, Quilted Loadspace Liner, Pet Access Ramp and Portable Rinse System.

*Defender 110 only. Not available with PHEV.



DESIGN

ACCESSORY PACKS

CAPABILITY

PRACTICALITY

TECHNOLOGY

PERSONALISATION

ABOVE & BEYOND COLLECTION

Embodying Land Rover Defender's sheer strength, our Above & Beyond Collection includes clothing and technical gifts. Each one proudly represents the vehicle's character.

Items from the Above & Beyond Collection are featured throughout this piece.

[EXPLORE THE COLLECTION](#)



DESIGN

ACCESSORY PACKS

CAPABILITY

PRACTICALITY

TECHNOLOGY

PERSONALISATION



Rodinia Hybrid Jacket - Ultimate versatility. Both showerproof and windproof, with quick-burst zip technology that changes the jacket into a gilet in one quick motion.

Above & Beyond Belt - Featuring the world's safest and strongest ANSI COBRA® buckle, made from heavy-grade nylon, this item is supremely capable. Tested to extremes.

Above & Beyond Pen - Superbly crafted. Underwater, upside down, through extremes of heat and cold - made with aircraft-grade aluminium, it will write wherever you want.

Reversible Base Layer - Designed to keep you warm or cool, the base layer adapts to your environment. Constructed with Merino wool and high-performance fabrics with wicking qualities.

Mirovia Seam Sealed Backpack - Resiliently protective. Its large, water-resistant roll top and heat-sealed seamed construction help defend contents from the elements.

Above & Beyond Flask - Essential for all journeys, made from double-walled stainless steel with a 500ml capacity. Robust construction for all environments with a paracord for ease of carrying.



DESIGN

ACCESSORY PACKS

CAPABILITY

PRACTICALITY

TECHNOLOGY

PERSONALISATION

PROUD PARTNERS

TUSK

Land Rover is a proud global partner of Tusk. Since its formation in 1990, the charity has raised over US\$100m. Through progressive conservation initiatives, Tusk provides resources that empower communities and individuals as they strive to build a sustainable future for the African continent and its wildlife. For decades Land Rover Defenders have tackled challenging terrain and allowed Tusk project managers to carry out vital field work.



DESIGN

ACCESSORY PACKS

CAPABILITY

PRACTICALITY

TECHNOLOGY

PERSONALISATION



BUILD YOUR OWN

Use the configurator to design your perfect Defender.



FIND A RETAILER

Search for a Land Rover Retailer near you.



COMPARE OUR VEHICLES

Select up to three Land Rover vehicles and compare them side by side.



KEEP ME INFORMED

Sign up for all of the latest Land Rover news.

YOUR PEACE OF MIND

> CUSTOMER SERVICE

> LAND ROVER ROADSIDE ASSISTANCE

> LAND ROVER FINANCIAL SERVICES

> LAND ROVER FLEET & BUSINESS



DESIGN

ACCESSORY PACKS

CAPABILITY

PRACTICALITY

TECHNOLOGY

PERSONALISATION

IMPORTANT NOTICE: Some features on images may vary between optional and standard for different model years and due to the impact of Covid-19, many of our images have not been updated to reflect 22MY specifications. Please refer to the car configurator and additionally consult your local Retailer for detailed 22MY specifications and do not base an order on website imagery alone. Jaguar Land Rover Limited is constantly seeking ways to improve the specification, design and production of its vehicles, parts and accessories and alterations take place continually, and we reserve the right to change without notice.

COLOURS: Image colours reproduced here are provided for illustrative purposes only. Colours are reproduced on-screen and may therefore vary compared to the actual finish. The company reserves the right to alter or withdraw any colour finish without notice. Some of these colours may not be obtainable in your country. Please check availability of colours and current specifications with your Land Rover Retailer. Distributors and Retailers are not agents of Jaguar Land Rover Limited and have absolutely no authority to bind Jaguar Land Rover Limited to any express or implied undertaking or representation.

Information and images displayed in relation to the Pivi Pro technology, including Touchscreen, App screens, or sequences are subject to regular software updates, version control and other system/visual changes depending on options selected.

Optional features and their availability may differ by vehicle specification (model and powertrain), or require the installation of other features in order to be fitted. Please contact your local Retailer for more details, or configure your vehicle online. All in-car features should be used by drivers only when safe for them to do so. Drivers must ensure they are in full control of the vehicle at all times. Certain features require an appropriate SIM with a suitable data contract, which will require a further subscription after the initial term advised by your Retailer.

Castrol EDGE Professional exclusively recommended by Land Rover.

Android™ is a trademark of Google LLC.

ANSI Cobra © 2019 AUSTRIALPIN.

Apple® is a registered trademark of Apple Inc., registered in the US and other countries.

Meridian™ is a registered trademark of Meridian Audio Ltd.

Trifield™ and the three fields device is a trademark of Trifield Productions Ltd.

Musto® is a trademark of Musto Limited.

Vehicle shown is Defender 110 X in Gondwana Stone.

Jaguar Land Rover Limited

Registered Office: Abbey Road, Whitley,
Coventry CV3 4LF United Kingdom.

Registered in England: Number 1672070

landrover.com

© Copyright Jaguar Land Rover Limited 2021.



DESIGN

ACCESSORY PACKS

CAPABILITY

PRACTICALITY

TECHNOLOGY

PERSONALISATION

TECHNICAL SPECIFICATION 2021
LAND ROVER DEFENDER



ABOVE & BEYOND

DEFENDER



DEFENDER 90 TECHNICAL SPECIFICATION

			DIESEL	
ENGINE			D200	D240
Transmission			Automatic	Automatic
Driveline			All Wheel Drive (AWD)	All Wheel Drive (AWD)
Maximum power (PS/kW/rpm)			200 / 147 / 4.000	240 / 177 / 3.750-4.000
Maximum torque (Nm/rpm)			430 / 1.400-3.000	500 / 1.500-2.500
Capacity (cc)			1.999	1.999
No. of cylinders/Valves per cylinder			4 / 4	4 / 4
Cylinder layout			In-line	In-line
Bore/stroke (mm)			83,0 / 92,35	83,0 / 92,35
Compression ratio (:1)			15,5:1	15,5:1
Fuel tank capacity - useable litres			89	89
Diesel Exhaust Fluid (DEF) - useable litres			20,7	20,7
Diesel Particulate Filter (DPF)			■	■
FUEL ECONOMY*				
Seating			5 / 6	5 / 6
Consumption	Combined	l/100km (mpg)	7,6	7,6
CO ₂ Emissions	Combined	g/km	202	202

■ Standard

*The figures provided are NEDC calculated from official manufacturer's tests. Figures may vary according to environment and driving style. For comparison purposes only. Real world figures may differ.

Some features on images may vary between optional and standard for different model years and due to the impact of Covid-19, many of our images have not been updated to reflect 22MY specifications. Please refer to the car configurator and additionally consult your local Retailer for detailed 22MY specifications and do not base an order on website imagery alone. Jaguar Land Rover Limited is constantly seeking ways to improve the specification, design and production of its vehicles, parts and accessories and alterations take place continually, and we reserve the right to change without notice.

DEFENDER 90 TECHNICAL SPECIFICATION

	DIESEL	
	D200	D240
PERFORMANCE		
Acceleration (secs) 0-100km/h (0-60mph)	10,2 (9,6)	9,0 (8,6)
Maximum speed km/h (mph)	175 (109)	188 (117)
BRAKES		
Front type	Twin piston sliding fist caliper	Twin piston sliding fist caliper
Front diameter (mm)	349	349
Rear type	Single piston sliding fist with iEPB and ventilated disc	Single piston sliding fist with iEPB and ventilated disc
Rear diameter (mm)	325	325
Park Brake	Integrated Electric Parking Brake (iEPB)	Integrated Electric Parking Brake (iEPB)
WEIGHTS (kg)*		
Seating	5 / 6	5 / 6
Unladen weight (EU)**	2.208 / 2.231	2.208 / 2.231
Unladen weight (DIN)†	2.133 / 2.156	2.133 / 2.156
Gross Vehicle Weight (GVW)	2.940 / 2.970	2.940 / 2.970
Maximum Payload††	Up to 750	Up to 750
TOWING (kg)		
Seating	5 / 6	5 / 6
Unbraked trailer	750	750
Maximum towing	3.500	3.500
Maximum coupling point/nose weight	150	150
Maximum vehicle and trailer combination	6.440 / 6.470	6.440 / 6.470
ROOF CARRYING (kg)		
Maximum roof load (including cross bars)	80 / 100‡	80 / 100‡
Maximum dynamic roof load (including Expedition Roof Rack)	80 / 118‡‡	80 / 118‡‡
Maximum static roof load (including Expedition Roof Rack)	300	300

*Weights reflect vehicles to standard specifications. Optional extras increase weight.

**Includes a 75kg driver, full fluids and 90% fuel.

†Includes full fluids and 90% fuel.

††Dependent on specifications and seating configuration.

‡Roof load allows for up to 100kg when fitted Off-road tyres.

‡‡Dynamic roof load allows for up to 118kg when fitted with Off-road tyres.

DEFENDER 90 TECHNICAL SPECIFICATION

			DIESEL		
ENGINE			D250		D300
Transmission			Automatic		
Driveline			All Wheel Drive (AWD)		
Maximum power (PS/kW/rpm)			249 / 183 / 4.000		
Maximum torque (Nm/rpm)			600 / 1.250-2.250		
Capacity (cc)			2.996		
No. of cylinders/Valves per cylinder			6 / 4		
Cylinder layout			In-line		
Bore/stroke (mm)			83,0 / 92,31		
Compression ratio (:1)			15,5:1		
Fuel tank capacity - useable litres			89		
Diesel Exhaust Fluid (DEF) - useable litres			20,7		
Diesel Particulate Filter (DPF)			■		
SEATING			5 / 6		
Seating			5 / 6		
Consumption	Combined	l/100km (mpg)	8,0		
CO ₂ Emissions	Combined	g/km	209		

■ Standard

*The figures provided are NEDC calculated from official manufacturer's tests. Figures may vary according to environment and driving style. For comparison purposes only. Real world figures may differ.

DEFENDER 90 TECHNICAL SPECIFICATION

	DIESEL	
	D250	D300
PERFORMANCE		
Acceleration (secs) 0-100km/h (0-60mph)	8,0 (7,6)	6,7 (6,3)
Maximum speed km/h (mph)	188 (117)	191 (119) ^{°°}
BRAKES		
Front type	Twin piston sliding fist caliper*	4 piston opposed 2 piece caliper
Front diameter (mm)	349**	363 [†]
Rear type	Single piston sliding fist with iEPB and ventilated disc	Single piston sliding fist with iEPB and ventilated disc
Rear diameter (mm)	325 [†]	350 [†]
Park Brake	Integrated Electric Parking Brake (iEPB)	Integrated Electric Parking Brake (iEPB)
WEIGHTS (kg)^{††}		
Seating	5 / 6	5 / 6
Unladen weight (EU) [‡]	2.273 / 2.296	2.273 / 2.296
Unladen weight (DIN) ^{‡‡}	2.198 / 2.221	2.198 / 2.221
Gross Vehicle Weight (GVW)	2.970 / 3.050	2.970 / 3.050
Maximum Payload ^Δ	Up to 700	Up to 700
TOWING (kg)		
Seating	5 / 6	5 / 6
Unbraked trailer	750	750
Maximum towing	3.500	3.500
Maximum coupling point/nose weight	150	150
Maximum vehicle and trailer combination	6.470 / 6.550	6.470 / 6.550
ROOF CARRYING (kg)		
Maximum roof load (including cross bars)	80 / 100 [°]	80 / 100 [°]
Maximum dynamic roof load (including Expedition Roof Rack)	80 / 118 [▲]	80 / 118 [▲]
Maximum static roof load (including Expedition Roof Rack)	300	300

*6 piston opposed monobloc caliper when fitted with 22" wheels.
 **380mm when fitted with 22" wheels.
 †365mm when fitted with 22" wheels.
 ††Weights reflect vehicles to standard specifications. Optional extras increase weight.
 ‡Includes a 75kg driver, full fluids and 90% fuel.
 ‡‡Includes full fluids and 90% fuel.
 ΔDependent on specifications and seating configuration.
 °Roof load allows for up to 100kg when fitted Off-road tyres.
 ▲Dynamic roof load allows for up to 118kg when fitted with Off-road tyres.
 °°Max speed is 209km/h (130mph) when fitted with 22" wheels.

DEFENDER 90 TECHNICAL SPECIFICATION

			DIESEL MHEV			
ENGINE			D200		D250	
Transmission			Automatic		Automatic	
Driveline			All Wheel Drive (AWD)		All Wheel Drive (AWD)	
Maximum power (PS/kW/rpm)			200 / 147 / 4.000		249 / 183 / 4.000	
Maximum torque (Nm/rpm)			500 / 1.250-2.500		570 / 1.250-2.250	
Capacity (cc)			2.996		2.996	
No. of cylinders/Valves per cylinder			6 / 4		6 / 4	
Cylinder layout			In-line		In-line	
Bore/stroke (mm)			83,0 / 92,31		83,0 / 92,31	
Compression ratio (:1)			15,5:1		15,5:1	
Fuel tank capacity - useable litres			89		89	
Diesel Exhaust Fluid (DEF) - useable litres			20,7		20,7	
Diesel Particulate Filter (DPF)			■		■	
FUEL ECONOMY - NEDC EQUIVALENT (NEDC2)*			Class A		Class C	
Seating			5 / 6		5 / 6	
NEDC2 Consumption	Urban	l/100km (mpg)	9,4 (30,1)	9,6 (29,4)	9,4 (30,1)	9,6 (29,4)
	Extra Urban	l/100km (mpg)	6,5 (43,5)	6,7 (42,2)	6,5 (43,5)	6,7 (42,2)
	Combined	l/100km (mpg)	7,6 (37,2)	7,7 (36,7)	7,6 (37,2)	7,7 (36,7)
NEDC2 CO ₂ Emissions	Urban	g/km	247	252	247	252
	Extra Urban	g/km	172	176	172	176
	Combined	g/km	199	204	199	204
FUEL ECONOMY - WLTP**			Class A		Class C	
Seating			5 / 6		5 / 6	
WLTP Consumption Test Energy	Low	l/100km (mpg)	11,8-12,3 (24,0-22,9) / 11,8-12,4 (23,8-22,9)		11,8-12,3 (24,0-22,9) / 11,8-12,4 (23,8-22,9)	
	Medium	l/100km (mpg)	8,3-8,8 (33,9-32,2) / 8,4-8,8 (33,7-32,1)		8,3-8,8 (33,9-32,2) / 8,4-8,8 (33,7-32,1)	
	High	l/100km (mpg)	6,9-7,7 (40,7-36,8) / 7,0-7,7 (40,4-36,7)		6,9-7,7 (40,7-36,8) / 7,0-7,7 (40,4-36,7)	
	Extra High	l/100km (mpg)	9,1-9,9 (31,2-28,5) / 9,1-9,9 (31,1-28,5)		9,1-9,9 (31,2-28,5) / 9,1-9,9 (31,1-28,5)	
	Combined	l/100km (mpg)	8,6-9,3 (32,8-30,4) / 8,7-9,3 (32,6-30,3)		8,6-9,3 (32,8-30,4) / 8,7-9,3 (32,6-30,3)	
WLTP CO ₂ Emissions	Low	g/km	309-323 / 311-324		309-323 / 311-324	
	Medium	g/km	219-230 / 220-231		219-230 / 220-231	
	High	g/km	182-201 / 183-202		182-201 / 183-202	
	Extra High	g/km	237-260 / 238-260		237-260 / 238-260	
	Combined	g/km	226-244 / 227-245		226-244 / 227-245	

■ Standard

Class A (All wheels with All-season tyres)
Class C (All wheels with Off-road tyres)

*The figures provided are NEDC2 calculated from official manufacturer's WLTP tests in accordance with EU legislation. For comparison purposes only. Real world figures may differ. CO₂ and fuel economy figures may vary according to factors such as driving styles, environmental conditions, load, wheel fitment and accessories fitted. NEDC2 are figures calculated using a Government formula from WLTP figures equivalent to what they would have been under the old NEDC test. The correct tax treatment can then be applied.

**The figures provided are as a result of official manufacturer's tests in accordance with EU legislation. For comparison purposes only. Real world figures may differ. CO₂ and fuel economy figures may vary according to factors such as driving styles, environmental conditions, load, wheel fitment and accessories fitted.

DEFENDER 90 TECHNICAL SPECIFICATION

	DIESEL MHEV	
	D200	D250
PERFORMANCE		
Acceleration (secs) 0-100km/h (0-60mph)	9,8 (9,1)	8,0 (7,6)
Maximum speed km/h (mph)	175 (109)	188 (117)
BRAKES		
Front type	Twin piston sliding fist caliper*	Twin piston sliding fist caliper*
Front diameter (mm)	349**	349**
Rear type	Single piston sliding fist with iEPB and ventilated disc	Single piston sliding fist with iEPB and ventilated disc
Rear diameter (mm)	325†	325†
Park Brake	Integrated Electric Parking Brake (iEPB)	Integrated Electric Parking Brake (iEPB)
WEIGHTS (kg)**		
Seating	5 / 6	5 / 6
Unladen weight (EU)‡	2.303 / 2.326	2.303 / 2.326
Unladen weight (DIN)‡‡	2.228 / 2.251	2.228 / 2.251
Gross Vehicle Weight (GVW)	2.970 / 3.050	2.970 / 3.050
Maximum Payload ^Δ	Up to 700	Up to 700
TOWING (kg)		
Seating	5 / 6	5 / 6
Unbraked trailer	750	750
Maximum towing	3.500	3.500
Maximum coupling point/nose weight	150	150
Maximum vehicle and trailer combination	6.470 / 6.550	6.470 / 6.550
ROOF CARRYING (kg)		
Maximum roof load (including cross bars)	80 / 100 [◊]	80 / 100 [◊]
Maximum dynamic roof load (including Expedition Roof Rack)	80 / 118 [▲]	80 / 118 [▲]
Maximum static roof load (including Expedition Roof Rack)	300	300

*6 piston opposed monobloc caliper when fitted with 22" wheels.

**380mm when fitted with 22" wheels.

†365mm when fitted with 22" wheels.

‡‡Weights reflect vehicles to standard specifications. Optional extras increase weight.

‡Includes a 75kg driver, full fluids and 90% fuel.

‡‡Includes full fluids and 90% fuel.

^ΔDependent on specifications and seating configuration.

[◊]Roof load allows for up to 100kg when fitted Off-road tyres.

[▲]Dynamic roof load allows for up to 118kg when fitted with Off-road tyres.

DEFENDER 90 TECHNICAL SPECIFICATION

ENGINE

Transmission
Driveline
Maximum power (PS/kW/rpm)
Maximum torque (Nm/rpm)
Capacity (cc)
No. of cylinders/Valves per cylinder
Cylinder layout
Bore/stroke (mm)
Compression ratio (:1)
Fuel tank capacity - useable litres
Diesel Exhaust Fluid (DEF) - useable litres
Diesel Particulate Filter (DPF)

FUEL ECONOMY - NEDC EQUIVALENT (NEDC2)*

Seating		
NEDC2 Consumption	Urban	l/100km (mpg)
	Extra Urban	l/100km (mpg)
	Combined	l/100km (mpg)
NEDC2 CO ₂ Emissions	Urban	g/km
	Extra Urban	g/km
	Combined	g/km

FUEL ECONOMY - WLTP**

Seating		
WLTP Consumption Test Energy	Low	l/100km (mpg)
	Medium	l/100km (mpg)
	High	l/100km (mpg)
	Extra High	l/100km (mpg)
	Combined	l/100km (mpg)
WLTP CO ₂ Emissions	Low	g/km
	Medium	g/km
	High	g/km
	Extra High	g/km
	Combined	g/km

DIESEL MHEV

D300

Automatic
All Wheel Drive (AWD)
300 / 221 / 4.000
650 / 1.500-2.500
2.996
6 / 4
In-line
83,0 / 92,31
15,5:1
89
20,7
■

Class A

Class C

5 / 6	5 / 6
9,4 (30,1)	9,6 (29,4)
6,5 (43,5)	6,7 (42,2)
7,6 (37,2)	7,7 (36,7)
247	252
172	176
199	204

■ Standard

Class A (All wheels with All-season tyres)
Class C (All wheels with Off-road tyres)

*The figures provided are NEDC2 calculated from official manufacturer's WLTP tests in accordance with EU legislation. For comparison purposes only. Real world figures may differ. CO₂ and fuel economy figures may vary according to factors such as driving styles, environmental conditions, load, wheel fitment and accessories fitted. NEDC2 are figures calculated using a Government formula from WLTP figures equivalent to what they would have been under the old NEDC test. The correct tax treatment can then be applied.

**The figures provided are as a result of official manufacturer's tests in accordance with EU legislation. For comparison purposes only. Real world figures may differ. CO₂ and fuel economy figures may vary according to factors such as driving styles, environmental conditions, load, wheel fitment and accessories fitted.

DEFENDER 90 TECHNICAL SPECIFICATION

	DIESEL MHEV
	D300
PERFORMANCE	
Acceleration (secs) 0-100km/h (0-60mph)	6,7 (6,3)
Maximum speed km/h (mph)	191 (119) [◊]
BRAKES	
Front type	4 piston opposed 2 piece caliper
Front diameter (mm)	363*
Rear type	Single piston sliding fist with iEPB and ventilated disc
Rear diameter (mm)	350*
Park Brake	Integrated Electric Parking Brake (iEPB)
WEIGHTS (kg)**	
Seating	5 / 6
Unladen weight (EU) [†]	2.303 / 2.326
Unladen weight (DIN) ^{††}	2.228 / 2.251
Gross Vehicle Weight (GVW)	2.970 / 3.050
Maximum Payload [‡]	Up to 700
TOWING (kg)	
Seating	5 / 6
Unbraked trailer	750
Maximum towing	3.500
Maximum coupling point/nose weight	150
Maximum vehicle and trailer combination	6.470 / 6.550
ROOF CARRYING (kg)	
Maximum roof load (including cross bars)	80 / 100 ^{‡‡}
Maximum dynamic roof load (including Expedition Roof Rack)	80 / 118 ^Δ
Maximum static roof load (including Expedition Roof Rack)	300

*365mm when fitted with 22" wheels.

**Weights reflect vehicles to standard specifications. Optional extras increase weight.

[†]Includes a 75kg driver, full fluids and 90% fuel.

^{††}Includes full fluids and 90% fuel.

[‡]Dependent on specifications and seating configuration.

^{‡‡}Roof load allows for up to 100kg when fitted Off-road tyres.

^ΔDynamic roof load allows for up to 118kg when fitted with Off-road tyres.

[◊] Max speed is 209km/h (130mph) when fitted with 22" wheels.

DEFENDER 90 TECHNICAL SPECIFICATION

ENGINE			PETROL		PETROL MHEV	
			P300		P400	
Transmission			Automatic		Automatic	
Driveline			All Wheel Drive (AWD)		All Wheel Drive (AWD)	
Maximum power (PS/kW/rpm)			300 / 221 / 5.500		400 / 294 / 5.500-6.500	
Maximum torque (Nm/rpm)			400 / 1.500-4.000		550 / 2.000-5.000	
Capacity (cc)			1.997		2.995	
No. of cylinders/Valves per cylinder			4 / 4		6 / 4	
Cylinder layout			In-line		In-line	
Bore/stroke (mm)			83,0 / 92,29		83,0 / 92,29	
Compression ratio (:1)			9,5+ / -0,5		10,5	
Fuel tank capacity - useable litres			90		90	
FUEL ECONOMY - NEDC EQUIVALENT (NEDC2)*			Class A	Class C	Class A	Class C
Seating			5 / 6	5 / 6	5 / 6	5 / 6
NEDC2 Consumption	Urban	l/100km (mpg)	10,5 (26,9)	11,0 (25,7)	12,1 (23,3)	12,4 (22,8)
	Extra Urban	l/100km (mpg)	9,1 (31,0)	9,3 (30,4)	8,1 (34,9)	8,4 (33,6)
	Combined	l/100km (mpg)	9,6 (29,4)	9,9 (28,5)	9,6 (29,4)	9,8 (28,8) / 9,9 (28,5)
NEDC2 CO ₂ Emissions	Urban	g/km	238	249	278	284
	Extra Urban	g/km	206	211	185	192
	Combined	g/km	217 / 218	225	219	225 / 226
FUEL ECONOMY - WLTP**			5 / 6		5 / 6	
Seating			5 / 6		5 / 6	
WLTP Consumption Test Energy	Low	l/100km (mpg)	14,6-15,1 (19,3-18,7)		14,6-15,5 (19,3-18,2) / 14,7-15,5 (19,2-18,2)	
	Medium	l/100km (mpg)	10,8-11,7 (26,3-24,1) / 10,8-11,7 (26,2-24,1)		10,4-11,1 (27,0-25,3) / 10,5-11,2 (26,9-25,3)	
	High	l/100km (mpg)	9,9-10,9 (28,4-25,9) / 9,9-10,9 (28,4-25,8)		9,3-10,1 (30,4-27,8) / 9,3-10,2 (30,3-27,8)	
	Extra High	l/100km (mpg)	12,1-13,3 (23,3-21,3) / 12,1-13,2 (23,3-21,3)		11,5-12,7 (24,5-22,2) / 11,6-12,8 (24,4-22,1)	
	Combined	l/100km (mpg)	11,5-12,5 (24,6-22,7) / 11,5-12,5 (24,5-22,7)		11,0-12,0 (25,6-23,6) / 11,1-12,0 (25,5-23,6)	
WLTP CO ₂ Emissions	Low	g/km	329-341 / 330-341		333-352 / 334-353	
	Medium	g/km	242-264 / 243-264		237-253 / 238-254	
	High	g/km	224-246 / 224-246		211-230 / 212-231	
	Extra High	g/km	273-299 / 273-299		262-289 / 263-290	
	Combined	g/km	259-281 / 259-281		251-272 / 252-272	

Class A (All wheels with All-season tyres)
Class C (All wheels with Off-road tyres)

*The figures provided are NEDC2 calculated from official manufacturer's WLTP tests in accordance with EU legislation. For comparison purposes only. Real world figures may differ. CO₂ and fuel economy figures may vary according to factors such as driving styles, environmental conditions, load, wheel fitment and accessories fitted. NEDC2 are figures calculated using a Government formula from WLTP figures equivalent to what they would have been under the old NEDC test. The correct tax treatment can then be applied.

**The figures provided are as a result of official manufacturer's tests in accordance with EU legislation. For comparison purposes only. Real world figures may differ. CO₂ and fuel economy figures may vary according to factors such as driving styles, environmental conditions, load, wheel fitment and accessories fitted.

DEFENDER 90 TECHNICAL SPECIFICATION

	PETROL	PETROL MHEV
	P300	P400
PERFORMANCE		
Acceleration (secs) 0-100km/h (0-60mph)	7,1 (6,7)	6,0 (5,7)
Maximum speed km/h (mph)	191 (119)	191 (119)*
BRAKES		
Front type	Twin piston sliding fist caliper**	4 piston opposed 2 piece caliper
Front diameter (mm)	349 [†]	363 [†]
Rear type	Single piston sliding fist with iEPB and ventilated disc	Single piston sliding fist with iEPB and ventilated disc
Rear diameter (mm)	325 ^{††}	350 ^{††}
Park Brake	Integrated Electric Parking Brake (iEPB)	Integrated Electric Parking Brake (iEPB)
WEIGHTS (kg)[‡]		
Seating	5 / 6	5 / 6
Unladen weight (EU) ^{‡‡}	2.140 / 2.162	2.245 / 2.268 (2.351 / 2.362) ^{ΔΔ}
Unladen weight (DIN) ^Δ	2.065 / 2.087	2.170 / 2.193 (2.276 / 2.287) ^{ΔΔ}
Gross Vehicle Weight (GVW)	2.910 / 2.950	2.970 / 3.000
Maximum Payload [◊]	Up to 800	Up to 750
TOWING (kg)		
Seating	5 / 6	5 / 6
Unbraked trailer	750	750
Maximum towing	3.500	3.500
Maximum coupling point/nose weight	150	150
Maximum vehicle and trailer combination	6.410 / 6.450	6.470 / 6.500
ROOF CARRYING (kg)		
Maximum roof load (including cross bars)	80 / 100 ^{◊◊}	80 / 100 ^{◊◊}
Maximum dynamic roof load (including Expedition Roof Rack)	80 / 118 [▲]	80 / 118 [▲]
Maximum static roof load (including Expedition Roof Rack)	300	300

*Max speed is 209km/h (130mph) when fitted with 22" wheels.

**6 piston opposed monobloc caliper when fitted with 22" wheels.

[†]380mm when fitted with 22" wheels.

^{††}365mm when fitted with 22" wheels.

[‡]Weights reflect vehicles to standard specifications. Optional extras increase weight.

^{‡‡}Includes a 75kg driver, full fluids and 90% fuel.

^ΔIncludes full fluids and 90% fuel.

^{ΔΔ}P400 X model.

[◊]Dependent on specifications and seating configuration.

^{◊◊}Roof load allows for up to 100kg when fitted Off-road tyres.

[▲]Dynamic roof load allows for up to 118kg when fitted with Off-road tyres.

DEFENDER 90 TECHNICAL SPECIFICATION

ENGINE

Transmission
Driveline
Maximum power (PS/kW/rpm)
Maximum torque (Nm/rpm)
Capacity (cc)
No. of cylinders/Valves per cylinder
Cylinder layout
Bore/stroke (mm)
Compression ratio (:1)
Fuel tank capacity - useable litres

PETROL
V8 P525
Automatic
All Wheel Drive (AWD)
525 / 386 / 6.000-6.500
625 / 2.500-5.500
4.999,7
8 / 4
Longitudinal V8
92,5 / 93,0
9,5
90

FUEL ECONOMY - NEDC EQUIVALENT (NEDC2)*

Seating		
NEDC2 Consumption	Urban	l/100km (mpg)
	Extra Urban	l/100km (mpg)
	Combined	l/100km (mpg)
NEDC2 CO ₂ Emissions	Urban	g/km
	Extra Urban	g/km
	Combined	g/km

	Class A	Class C
	5	5
	17,0 (16,6)	17,0 (16,6)
	10,3 (27,4)	10,3 (27,4)
	12,8 (22,1)	12,8 (22,1)
	386	386
	234	234
	290	290

FUEL ECONOMY - WLTP**

Seating		
WLTP Consumption Test Energy	Low	l/100km (mpg)
	Medium	l/100km (mpg)
	High	l/100km (mpg)
	Extra High	l/100km (mpg)
	Combined	l/100km (mpg)
WLTP CO ₂ Emissions	Low	g/km
	Medium	g/km
	High	g/km
	Extra High	g/km
	Combined	g/km

	5
	21,4-21,6 (13,2-13,1)
	14,1-14,3 (20,1-19,7)
	12,3-12,7 (22,9-22,3)
	14,1-14,5 (20,0-19,5)
	14,5-14,8 (19,5-19,0)
	483-487
	317-323
	278-286
	318-327
	327-335

Class A (All wheels with All-season tyres)
Class C (All wheels with Off-road tyres)

*The figures provided are NEDC2 calculated from official manufacturer's WLTP tests in accordance with EU legislation. For comparison purposes only. Real world figures may differ. CO₂ and fuel economy figures may vary according to factors such as driving styles, environmental conditions, load, wheel fitment and accessories fitted. NEDC2 are figures calculated using a Government formula from WLTP figures equivalent to what they would have been under the old NEDC test. The correct tax treatment can then be applied.

**The figures provided are as a result of official manufacturer's tests in accordance with EU legislation. For comparison purposes only. Real world figures may differ. CO₂ and fuel economy figures may vary according to factors such as driving styles, environmental conditions, load, wheel fitment and accessories fitted.

DEFENDER 90 TECHNICAL SPECIFICATION

PERFORMANCE

Acceleration (secs) 0-100km/h (0-60mph)

Maximum speed km/h (mph)

BRAKES

Front type

Front diameter (mm)

Rear type

Rear diameter (mm)

Park Brake

WEIGHTS (kg)**

Seating

Unladen weight (EU)[†]

Unladen weight (DIN)^{††}

Gross Vehicle Weight (GVW)

Maximum Payload[‡]

TOWING (kg)

Seating

Unbraked trailer

Maximum towing

Maximum coupling point/nose weight

Maximum vehicle and trailer combination

ROOF CARRYING (kg)

Maximum roof load

Maximum static roof load

PETROL

V8 P525

5,2 (4,9)

240 (149)*

6 piston opposed monobloc caliper and ventilated disc

380

Single piston sliding fist with iEPB and ventilated disc

365

Integrated Electric Parking Brake (iEPB)

5

2.546

2.471

3.040

Up to 550

5

750

3.500

150

6.540

0^{‡‡}

300

*Max speed is 191km/h (119mph) when fitted with off-road tyres.

**Weights reflect vehicles to standard specifications. Optional extras increase weight.

[†]Includes a 75kg driver, full fluids and 90% fuel.

^{††}Includes full fluids and 90% fuel.

[‡]Dependent on specifications and seating configuration.

^{‡‡}Defender V8 models have no dynamic roof loading capacity.

DEFENDER 110 TECHNICAL SPECIFICATION

			DIESEL	
			D200	D240
ENGINE				
Transmission			Automatic	Automatic
Driveline			All Wheel Drive (AWD)	All Wheel Drive (AWD)
Maximum power (PS/kW/rpm)			200 / 147 / 4.000	240 / 177 / 3.750-4.000
Maximum torque (Nm/rpm)			430 / 1.400-3.000	500 / 1.500-2.500
Capacity (cc)			1.999	1.999
No. of cylinders/Valves per cylinder			4 / 4	4 / 4
Cylinder layout			In-line	In-line
Bore/stroke (mm)			83,0 / 92,35	83,0 / 92,35
Compression ratio (:1)			15,5:1	15,5:1
Fuel tank capacity - useable litres			89	89
Diesel Exhaust Fluid (DEF) - useable litres			20,7	20,7
Diesel Particulate Filter (DPF)			■	■
FUEL ECONOMY*				
Seating			5 / 5 + 2	5 / 5 + 2
Consumption	Combined	l/100km (mpg)	7,6	7,6
CO ₂ Emissions	Combined	g/km	202	202

■ Standard

*The figures provided are NEDC calculated from official manufacturer's tests. Figures may vary according to environment and driving style. For comparison purposes only. Real world figures may differ.

DEFENDER 110 TECHNICAL SPECIFICATION

	DIESEL	
	D200	D240
PERFORMANCE		
Acceleration (secs) 0-100km/h (0-60mph)	10,3 (9,9)	9,1 (8,7)
Maximum speed km/h (mph)	175 (109)	188 (117)
BRAKES		
Front type	Twin piston sliding fist caliper*	Twin piston sliding fist caliper*
Front diameter (mm)	349**	349**
Rear type	Single piston sliding fist with iEPB and ventilated disc	Single piston sliding fist with iEPB and ventilated disc
Rear diameter (mm)	325†	325†
Park Brake	Integrated Electric Parking Brake (iEPB)	Integrated Electric Parking Brake (iEPB)
WEIGHTS (kg)**		
Seating	5 / 5 + 2	5 / 5 + 2
Unladen weight (EU)‡	2.293 / 2.350	2.323 / 2.380
Unladen weight (DIN)‡‡	2.218 / 2.275	2.248 / 2.305
Gross Vehicle Weight (GVW)	3.150 / 3.215	3.150 / 3.215
Maximum Payload ^Δ	Up to 850	Up to 850
TOWING (kg)		
Seating	5 / 5 + 2	5 / 5 + 2
Unbraked trailer	750	750
Maximum towing	3.500	3.500
Maximum coupling point/nose weight	150	150
Maximum vehicle and trailer combination	6.650 / 6.715	6.650 / 6.715
ROOF CARRYING (kg)		
Maximum roof load (including cross bars)	100	100
Maximum dynamic roof load (including Expedition Roof Rack)	100 / 168 [◊]	100 / 168 [◊]
Maximum static roof load (including Expedition Roof Rack)	300	300

*6 piston opposed monobloc caliper when fitted with 22" wheels.

**380mm when fitted with 22" wheels.

†365mm when fitted with 22" wheels.

‡‡Weights reflect vehicles to standard specifications. Optional extras increase weight.

‡Includes a 75kg driver, full fluids and 90% fuel.

‡‡Includes full fluids and 90% fuel.

ΔDependent on specifications and seating configuration.

◊Dynamic roof load allows for up to 168kg when fitted with Off-road tyres.

DEFENDER 110 TECHNICAL SPECIFICATION

			DIESEL		
ENGINE			D250		D300
Transmission			Automatic		
Driveline			All Wheel Drive (AWD)		
Maximum power (PS/kW/rpm)			249 / 183 / 4.000		
Maximum torque (Nm/rpm)			570 / 1.250-2.250		
Capacity (cc)			2.996		
No. of cylinders/Valves per cylinder			6 / 4		
Cylinder layout			In-line		
Bore/stroke (mm)			83,0 / 92,31		
Compression ratio (:1)			15,5:1		
Fuel tank capacity - useable litres			89		
Diesel Exhaust Fluid (DEF) - useable litres			20,7		
Diesel Particulate Filter (DPF)			■		
FUEL ECONOMY*					
Seating			5 / 5 + 2		
Consumption	Combined	l/100km (mpg)	8,0		
CO ₂ Emissions	Combined	g/km	209		

■ Standard

*The figures provided are NEDC calculated from official manufacturer's tests. Figures may vary according to environment and driving style. For comparison purposes only. Real world figures may differ.

DEFENDER 110 TECHNICAL SPECIFICATION

	DIESEL	
	D250	D300
PERFORMANCE		
Acceleration (secs) 0-100km/h (0-60mph)	8,3 (7,9)	7,0 (6,6)
Maximum speed km/h (mph)	188 (117)	191 (119) ^{◊◊}
BRAKES		
Front type	Twin piston sliding fist caliper*	4 piston opposed 2 piece caliper*
Front diameter (mm)	349**	363**
Rear type	Single piston sliding fist with iEPB and ventilated disc	Single piston sliding fist with iEPB and ventilated disc
Rear diameter (mm)	325 [†]	350 [†]
Park Brake	Integrated Electric Parking Brake (iEPB)	Integrated Electric Parking Brake (iEPB)
WEIGHTS (kg)^{††}		
Seating	5 / 5 + 2	5 / 5 + 2
Unladen weight (EU) [‡]	2.385 / 2.441	2.385 / 2.441
Unladen weight (DIN) ^{‡‡}	2.310 / 2.366	2.300 / 2.366
Gross Vehicle Weight (GVW)	3.200 / 3.280	3.200 / 3.280
Maximum Payload ^Δ	Up to 850	Up to 850
TOWING (kg)		
Seating	5 / 5 + 2	5 / 5 + 2
Unbraked trailer	750	750
Maximum towing	3.500	3.500
Maximum coupling point/nose weight	150	150
Maximum vehicle and trailer combination	6.700 / 6.780	6.700 / 6.780
ROOF CARRYING (kg)		
Maximum roof load (including cross bars)	100	100
Maximum dynamic roof load (including Expedition Roof Rack)	100 / 168 [◊]	100 / 168 [◊]
Maximum static roof load (including Expedition Roof Rack)	300	300

*6 piston opposed monobloc caliper when fitted with 22" wheels.

**380mm when fitted with 22" wheels.

†365mm when fitted with 22" wheels.

††Weights reflect vehicles to standard specifications. Optional extras increase weight.

‡Includes a 75kg driver, full fluids and 90% fuel.

‡‡Includes full fluids and 90% fuel.

ΔDependent on specifications and seating configuration.

◊Dynamic roof load allows for up to 168kg when fitted with Off-road tyres.

◊◊Max speed is 209km/h (130mph) when fitted with 22" wheels.

DEFENDER 110 TECHNICAL SPECIFICATION

			DIESEL MHEV			
ENGINE			D200		D250	
Transmission			Automatic		Automatic	
Driveline			All Wheel Drive (AWD)		All Wheel Drive (AWD)	
Maximum power (PS/kW/rpm)			200 / 147 / 4.000		249 / 183 / 4.000	
Maximum torque (Nm/rpm)			500 / 1.250-2.500		600 / 1.250-2.250	
Capacity (cc)			2.996		2.996	
No. of cylinders/Valves per cylinder			6 / 4		6 / 4	
Cylinder layout			In-line		In-line	
Bore/stroke (mm)			83,0 / 92,31		83,0 / 92,31	
Compression ratio (:1)			15,5:1		15,5:1	
Fuel tank capacity - useable litres			89		89	
Diesel Exhaust Fluid (DEF) - useable litres			20,7		20,7	
Diesel Particulate Filter (DPF)			■		■	
FUEL ECONOMY - NEDC EQUIVALENT (NEDC2)*			Class A		Class C	
Seating			5 / 5 + 2		5 / 5 + 2	
NEDC2 Consumption	Urban	l/100km (mpg)	9,4 (30,1)		9,6 (29,4)	
	Extra Urban	l/100km (mpg)	6,5 (43,5)		6,7 (42,2)	
	Combined	l/100km (mpg)	7,6 (37,2)		7,8 (36,2)	
NEDC2 CO ₂ Emissions	Urban	g/km	248		253	
	Extra Urban	g/km	172		176 / 177	
	Combined	g/km	200		204 / 205	
FUEL ECONOMY - WLTP**			Class A		Class C	
Seating			5 / 5 + 2		5 / 5 + 2	
WLTP Consumption Test Energy	Low	l/100km (mpg)	12,0-12,6 (23,5-22,5) / 12,1-12,7 (23,3-22,3)		12,0-12,6 (23,5-22,5) / 12,1-12,7 (23,3-22,3)	
	Medium	l/100km (mpg)	8,5-9,0 (33,2-31,5) / 8,6-9,0 (33,0-31,3)		8,5-9,0 (33,3-31,5) / 8,6-9,0 (33,0-31,3)	
	High	l/100km (mpg)	7,1-7,9 (39,7-36,0) / 7,2-7,9 (39,4-35,9)		7,1-7,9 (39,8-36,0) / 7,2-7,9 (39,4-35,7)	
	Extra High	l/100km (mpg)	9,2-10,0 (30,8-28,1) / 9,2-10,1 (30,7-28,2)		9,2-10,0 (30,8-28,1) / 9,2-10,1 (30,7-28,0)	
	Combined	l/100km (mpg)	8,8-9,5 (32,2-29,8) / 8,8-9,5 (31,9-29,6)		8,8-9,5 (32,2-29,8) / 8,8-9,5 (31,9-29,6)	
WLTP CO ₂ Emissions	Low	g/km	315-330 / 318-332		315-330 / 318-332	
	Medium	g/km	223-235 / 224-237		223-235 / 224-237	
	High	g/km	186-206 / 188-207		186-206 / 188-207	
	Extra High	g/km	240-264 / 242-265		240-264 / 242-265	
	Combined	g/km	230-249 / 232-250		230-249 / 232-250	

■ Standard

Class A (All wheels with All-season tyres)
Class C (All wheels with Off-road tyres)

*The figures provided are NEDC2 calculated from official manufacturer's WLTP tests in accordance with EU legislation. For comparison purposes only. Real world figures may differ. CO₂ and fuel economy figures may vary according to factors such as driving styles, environmental conditions, load, wheel fitment and accessories fitted. NEDC2 are figures calculated using a Government formula from WLTP figures equivalent to what they would have been under the old NEDC test. The correct tax treatment can then be applied.

**The figures provided are as a result of official manufacturer's tests in accordance with EU legislation. For comparison purposes only. Real world figures may differ. CO₂ and fuel economy figures may vary according to factors such as driving styles, environmental conditions, load, wheel fitment and accessories fitted.

DEFENDER 110 TECHNICAL SPECIFICATION

	DIESEL MHEV	
	D200	D250
PERFORMANCE		
Acceleration (secs) 0-100km/h (0-60mph)	10,2 (9,5)	8,3 (7,9)
Maximum speed km/h (mph)	175 (109)	188 (117)
BRAKES		
Front type	Twin piston sliding fist caliper*	Twin piston sliding fist caliper*
Front diameter (mm)	349**	349**
Rear type	Single piston sliding fist with iEPB and ventilated disc	Single piston sliding fist with iEPB and ventilated disc
Rear diameter (mm)	325†	325†
Park Brake	Integrated Electric Parking Brake (iEPB)	Integrated Electric Parking Brake (iEPB)
WEIGHTS (kg)**		
Seating	5 / 5 + 2	5 / 5 + 2
Unladen weight (EU)‡	2.415 / 2.471	2.415 / 2.471
Unladen weight (DIN)‡‡	2.340 / 2.396	2.340 / 2.396
Gross Vehicle Weight (GVW)	3.200 / 3.280	3.200 / 3.280
Maximum Payload ^Δ	Up to 800	Up to 800
TOWING (kg)		
Seating	5 / 5 + 2	5 / 5 + 2
Unbraked trailer	750	750
Maximum towing	3.500	3.500
Maximum coupling point/nose weight	150	150
Maximum vehicle and trailer combination	6.700 / 6.780	6.700 / 6.780
ROOF CARRYING (kg)		
Maximum roof load (including cross bars)	100	100
Maximum dynamic roof load (including Expedition Roof Rack)	100 / 168 [◊]	100 / 168 [◊]
Maximum static roof load (including Expedition Roof Rack)	300	300

*6 piston opposed monobloc caliper when fitted with 22" wheels.

**380mm when fitted with 22" wheels.

†365mm when fitted with 22" wheels.

‡‡Weights reflect vehicles to standard specifications. Optional extras increase weight.

‡Includes a 75kg driver, full fluids and 90% fuel.

‡‡Includes full fluids and 90% fuel.

ΔDependent on specifications and seating configuration.

◊Dynamic roof load allows for up to 168kg when fitted with Off-road tyres.

DEFENDER 110 TECHNICAL SPECIFICATION

ENGINE

Transmission
Driveline
Maximum power (PS/kW/rpm)
Maximum torque (Nm/rpm)
Capacity (cc)
No. of cylinders/Valves per cylinder
Cylinder layout
Bore/stroke (mm)
Compression ratio (:1)
Fuel tank capacity - useable litres
Diesel Exhaust Fluid (DEF) - useable litres
Diesel Particulate Filter (DPF)

FUEL ECONOMY - NEDC EQUIVALENT (NEDC2)*

Seating
NEDC2 Consumption
NEDC2 CO ₂ Emissions

Urban	l/100km (mpg)
Extra Urban	l/100km (mpg)
Combined	l/100km (mpg)
Urban	g/km
Extra Urban	g/km
Combined	g/km

FUEL ECONOMY - WLTP**

Seating
WLTP Consumption
WLTP CO ₂ Emissions

Low	l/100km (mpg)
Medium	l/100km (mpg)
High	l/100km (mpg)
Extra High	l/100km (mpg)
Combined	l/100km (mpg)
Low	g/km
Medium	g/km
High	g/km
Extra High	g/km
Combined	g/km

DIESEL MHEV

D300

Automatic
All Wheel Drive (AWD)
300 / 221 / 4.000
650 / 1.500-2.500
2.996
6 / 4
In-line
83,0 / 92,31
15,5:1
89
20,7
■

Class A

Class C

5 / 5 + 2
9,4 (30,1)
6,5 (43,5)
7,6 (37,2)
248
172
200

5 / 5 + 2
9,6 (29,4)
6,7 (42,2)
7,8 (36,2)
253
176 / 177
204 / 205

■ Standard

Class A (All wheels with All-season tyres)
Class C (All wheels with Off-road tyres)

*The figures provided are NEDC2 calculated from official manufacturer's WLTP tests in accordance with EU legislation. For comparison purposes only. Real world figures may differ. CO₂ and fuel economy figures may vary according to factors such as driving styles, environmental conditions, load, wheel fitment and accessories fitted. NEDC2 are figures calculated using a Government formula from WLTP figures equivalent to what they would have been under the old NEDC test. The correct tax treatment can then be applied.

**The figures provided are as a result of official manufacturer's tests in accordance with EU legislation. For comparison purposes only. Real world figures may differ. CO₂ and fuel economy figures may vary according to factors such as driving styles, environmental conditions, load, wheel fitment and accessories fitted.

DEFENDER 110 TECHNICAL SPECIFICATION

	DIESEL MHEV
	D300
PERFORMANCE	
Acceleration (secs) 0-100km/h (0-60mph)	7,0 (6,6)
Maximum speed km/h (mph)	191 (119) [▲]
BRAKES	
Front type	4 piston opposed 2 piece caliper*
Front diameter (mm)	363 ^{**}
Rear type	Single piston sliding fist with iEPB and ventilated disc
Rear diameter (mm)	350 [†]
Park Brake	Integrated Electric Parking Brake (iEPB)
WEIGHTS (kg)^{††}	
Seating	5 / 5 + 2
Unladen weight (EU) [‡]	2.415 / 2.471
Unladen weight (DIN) ^{‡‡}	2.340 / 2.396
Gross Vehicle Weight (GVW)	3.200 / 3.280
Maximum Payload ^Δ	Up to 800
TOWING (kg)	
Seating	5 / 5 + 2
Unbraked trailer	750
Maximum towing	3.500
Maximum coupling point/nose weight	150
Maximum vehicle and trailer combination	6.700 / 6.780
ROOF CARRYING (kg)	
Maximum roof load (including cross bars)	100
Maximum dynamic roof load (including Expedition Roof Rack)	100 / 168 [◊]
Maximum static roof load (including Expedition Roof Rack)	300

*6 piston opposed monobloc caliper when fitted with 22" wheels.

**380mm when fitted with 22" wheels.

†365mm when fitted with 22" wheels.

††Weights reflect vehicles to standard specifications. Optional extras increase weight.

‡Includes a 75kg driver, full fluids and 90% fuel.

‡‡Includes full fluids and 90% fuel.

ΔDependent on specifications and seating configuration.

◊Dynamic roof load allows for up to 168kg when fitted with Off-road tyres.

▲Max speed is 209km/h (130mph) when fitted with 22" wheels.

DEFENDER 110 TECHNICAL SPECIFICATION

ENGINE			PETROL		PETROL MHEV	
			P300		P400	
Transmission			Automatic		Automatic	
Driveline			All Wheel Drive (AWD)		All Wheel Drive (AWD)	
Maximum power (PS/kW/rpm)			300 / 221 / 5.500		400 / 294 / 5.500-6.500	
Maximum torque (Nm/rpm)			400 / 1.500-4.000		550 / 2.000-5.000	
Capacity (cc)			1.997		2.996	
No. of cylinders/Valves per cylinder			4 / 4		6 / 4	
Cylinder layout			In-line		In-line	
Bore/stroke (mm)			83,0 / 92,29		83,0 / 92,29	
Compression ratio (:1)			9,5+ / -0,5		10,5	
Fuel tank capacity - useable litres			90		90	
FUEL ECONOMY - NEDC EQUIVALENT (NEDC2)*			Class A	Class C	Class A	Class C
Seating			5 / 5 + 2	5 / 5 + 2	5 / 5 + 2	5 / 5 + 2
NEDC2 Consumption	Urban	l/100km (mpg)	10,5 (26,9) / 10,6 (26,6)	11,1 (25,4)	12,2 (23,2)	12,5 (22,6)
	Extra Urban	l/100km (mpg)	9,1 (31,0)	9,3 (30,4)	8,1 (34,9)	8,4 (33,6) / 8,5 (33,2)
	Combined	l/100km (mpg)	9,6 (29,4)	10,0 (28,2)	9,6 (29,4)	9,9 (28,5)
NEDC2 CO ₂ Emissions	Urban	g/km	239 / 240	251 / 252	279	285 / 286
	Extra Urban	g/km	206 / 207	211 / 212	186	193 / 194
	Combined	g/km	218 / 219	226 / 227	220	226 / 227
FUEL ECONOMY - WLTP**			5 / 5 + 2		5 / 5 + 2	
Seating			5 / 5 + 2		5 / 5 + 2	
WLTP Consumption Test Energy	Low	l/100km (mpg)	14,8-15,3 (19,1-18,4) / 14,9-15,4 (19,0-18,3)		15,0-15,8 (18,9-17,8) / 15,1-16,0 (18,7-17,7)	
	Medium	l/100km (mpg)	11,0-12,1 (25,6-23,4) / 11,2-12,2 (25,2-23,2)		10,7-11,4 (26,5-24,8) / 10,8-11,5 (26,2-24,6)	
	High	l/100km (mpg)	10,1-11,2 (27,9-25,3) / 10,2-11,3 (27,6-25,0)		9,5-10,4 (29,8-27,5) / 9,6-10,3 (29,6-27,1)	
	Extra High	l/100km (mpg)	12,3-13,5 (23,0-21,0) / 12,3-13,6 (22,9-20,8)		11,7-12,9 (24,1-21,8) / 11,8-13,0 (24,0-21,7)	
	Combined	l/100km (mpg)	11,7-12,7 (24,2-22,2) / 11,8-12,8 (23,9-22,0)		11,2-12,2 (25,1-23,1) / 11,3-12,3 (24,9-23,0)	
WLTP CO ₂ Emissions	Low	g/km	333-346 / 336-348		340-360 / 344-363	
	Medium	g/km	249-272 / 252-275		242-259 / 245-261	
	High	g/km	228-252 / 230-254		215-235 / 217-237	
	Extra High	g/km	276-304 / 278-305		266-294 / 268-295	
	Combined	g/km	263-287 / 266-289		255-277 / 258-279	

Class A (All wheels with All-season tyres)
Class C (All wheels with Off-road tyres)

*The figures provided are NEDC2 calculated from official manufacturer's WLTP tests in accordance with EU legislation. For comparison purposes only. Real world figures may differ. CO₂ and fuel economy figures may vary according to factors such as driving styles, environmental conditions, load, wheel fitment and accessories fitted. NEDC2 are figures calculated using a Government formula from WLTP figures equivalent to what they would have been under the old NEDC test. The correct tax treatment can then be applied.

**The figures provided are as a result of official manufacturer's tests in accordance with EU legislation. For comparison purposes only. Real world figures may differ. CO₂ and fuel economy figures may vary according to factors such as driving styles, environmental conditions, load, wheel fitment and accessories fitted.

DEFENDER 110 TECHNICAL SPECIFICATION

	PETROL	PETROL MHEV
	P300	P400
PERFORMANCE		
Acceleration (secs) 0-100km/h (0-60mph)	7,4 (7,0)	6,1 (5,8)
Maximum speed km/h (mph)	191 (119)	191 (119)*
BRAKES		
Front type	Twin piston sliding fist caliper**	4 piston opposed 2 piece caliper**
Front diameter (mm)	349 [†]	363 [†]
Rear type	Single piston sliding fist with iEPB and ventilated disc	Single piston sliding fist with iEPB and ventilated disc
Rear diameter (mm)	325 ^{††}	350 ^{††}
Park Brake	Integrated Electric Parking Brake (iEPB)	Integrated Electric Parking Brake (iEPB)
WEIGHTS (kg)[‡]		
Seating	5 / 5 + 2	5 / 5 + 2
Unladen weight (EU) ^{‡‡}	2.261 / 2.318	2.361 / 2.418
Unladen weight (DIN) [‡]	2.186 / 2.243	2.286 / 2.343
Gross Vehicle Weight (GVW)	3.105 / 3.200	3.165 / 3.250
Maximum Payload [‡]	Up to 850	Up to 800
TOWING (kg)		
Seating	5 / 5 + 2	5 / 5 + 2
Unbraked trailer	750	750
Maximum towing	3.500	3.500
Maximum coupling point/nose weight	150	150
Maximum vehicle and trailer combination	6.605 / 6.700	6.665 / 6.750
ROOF CARRYING (kg)		
Maximum roof load (including cross bars)	100	100
Maximum dynamic roof load (including Expedition Roof Rack)	100 / 168 [▲]	100 / 168 [▲]
Maximum static roof load (including Expedition Roof Rack)	300	300

*Max speed is 209km/h (130mph) when fitted with 22" wheels.

**6 piston opposed monobloc caliper when fitted with 22" wheels.

[†]380mm when fitted with 22" wheels.

^{††}365mm when fitted with 22" wheels.

[‡]Weights reflect vehicles to standard specifications. Optional extras increase weight.

^{‡‡}Includes a 75kg driver, full fluids and 90% fuel.

[‡]Includes full fluids and 90% fuel.

[‡]Dependent on specifications and seating configuration.

[▲]Dynamic roof load allows for up to 168kg when fitted with Off-road tyres.

DEFENDER 110 TECHNICAL SPECIFICATION

			PETROL PHEV	
			P400e	
ENGINE				
Transmission			Automatic	
Driveline			All Wheel Drive (AWD)	
Maximum power (PS/kW/rpm)			404* / 297 / 5.500	
Maximum torque (Nm/rpm)			640 / 1.500-4.400	
Capacity (cc)			1.997,34	
No. of cylinders/Valves per cylinder			4 / 4	
Cylinder layout			In-line	
Bore/stroke (mm)			83,0 / 92,29	
Compression ratio (:1)			9,5+ / -0,5	
Fuel tank capacity - useable litres			90**	
FUEL ECONOMY - NEDC EQUIVALENT (NEDC2) [†]			Class A	Class C
Seating			5 / 6	5 / 6
NEDC2 Consumption	Urban	l/100km (mpg)	-	-
	Extra Urban	l/100km (mpg)	-	-
	Combined	l/100km (mpg)	2,8 (100,9)	2,9 (97,4)
NEDC2 CO ₂ Emissions	Urban	g/km	-	-
	Extra Urban	g/km	-	-
	Combined	g/km	64	66
FUEL ECONOMY - WLTP ^{††}				
Seating			5 / 6	
WLTP Consumption Test Energy	Low	l/100km (mpg)	-	-
	Medium	l/100km (mpg)	-	-
	High	l/100km (mpg)	-	-
	Extra High	l/100km (mpg)	-	-
	Combined	l/100km (mpg)	3,3-3,9 (85,3-72,1) / 3,3-3,9 (84,6-71,7)	
WLTP CO ₂ Emissions	Low	g/km	-	-
	Medium	g/km	-	-
	High	g/km	-	-
	Extra High	g/km	-	-
	Combined	g/km	74-88 / 75-89	

- Not Available

Class A (All wheels with All-season tyres)
Class C (All wheels with Off-road tyres)

*In conjunction with electric motor.

**91,1 on Defender X.

†The figures provided are NEDC2 calculated from official manufacturer's WLTP tests in accordance with EU legislation with a fully charged battery. For comparison purposes only. Real world figures may differ. CO₂, fuel economy, energy consumption and range figures may vary according to factors such as driving styles, environmental conditions, load, wheel fitment and accessories fitted. NEDC2 are figures calculated using a Government formula from WLTP figures equivalent to what they would have been under the old NEDC test. The correct tax treatment can then be applied.

††The figures provided are as a result of official manufacturer's tests in accordance with EU legislation with a fully charged battery. For comparison purposes only. Real world figures may differ. CO₂, fuel economy, energy consumption and range figures may vary according to factors such as driving styles, environmental conditions, load, wheel fitment, accessories fitted, actual route and battery condition. Range figures are based upon production vehicle over a standardised route.

The figures provided are manufacturer's estimates and will be replaced with the official EU test figures as soon as they are available. For comparison purposes only. Real world figures may differ. CO₂ and fuel economy figures may vary according to factors such as driving styles, environmental conditions, load, wheel fitment and accessories.

DEFENDER 110 TECHNICAL SPECIFICATION

	PETROL PHEV
PERFORMANCE	P400e
Acceleration (secs) 0-100km/h (0-60mph)	5,6 (5,4)
Maximum speed km/h (mph)	191 (119)*
ELECTRIC MOTOR DATA	
Maximum speed km/h (mph)	140 (87)
EV Range Class A Combined (NEDC2**) km (miles)	53 (33)
EV Range Combined (WLTP [†]) km (miles)	43-39 (27-24)
BRAKES	
Front type	6 piston opposed monobloc caliper
Front diameter (mm)	380
Rear type	Single piston sliding fist with iEPB and ventilated disc
Rear diameter (mm)	365
Park Brake	Integrated Electric Parking Brake (iEPB)
WEIGHTS (kg)**	
Seating	5 / 6
Unladen weight (EU) [†]	2.600 (2.697 [▲]) / 2.623 (2.708 [▲])
Unladen weight (DIN) ^{**}	2.525 (2.622 [▲]) / 2.548 (2.633 [▲])
Gross Vehicle Weight (GVW)	3.300 / 3.320
Maximum Payload [‡]	Up to 700
TOWING (kg)	
Seating	5 / 6
Unbraked trailer	750
Maximum towing	3.000
Maximum coupling point/nose weight	150
Maximum vehicle and trailer combination	6.300 / 6.320
ROOF CARRYING (kg)	
Maximum roof load (including cross bars)	100
Maximum dynamic roof load (including Expedition Roof Rack)	100 / 168 [▲]
Maximum static roof load (including Expedition Roof Rack)	300

*Max speed is 209km/h (130mph) when fitted with 22" wheels.
 **The figures provided are NEDC2 calculated from official manufacturer's WLTP tests in accordance with EU legislation with a fully charged battery. For comparison purposes only. Real world figures may differ. CO₂, fuel economy, energy consumption and range figures may vary according to factors such as driving styles, environmental conditions, load, wheel fitment and accessories fitted. NEDC2 are figures calculated using a Government formula from WLTP figures equivalent to what they would have been under the old NEDC test. The correct tax treatment can then be applied.

[†]The figures provided are as a result of official manufacturer's tests in accordance with EU legislation with a fully charged battery. For comparison purposes only. Real world figures may differ. CO₂, fuel economy, energy consumption and range figures may vary according to factors such as driving styles, environmental conditions, load, wheel fitment, accessories fitted, actual route and battery condition. Range figures are based upon production vehicle over a standardised route.

^{**}Weights reflect vehicles to standard specifications. Optional extras increase weight.

[†]Includes a 75kg driver, full fluids and 90% fuel.

^{**}Includes full fluids and 90% fuel.

[▲]Applies to Defender X

[‡]Dependent on specifications and seating configuration.

[▲]Dynamic roof load allows for up to 168kg when fitted with Off-road tyres.

DEFENDER 110 TECHNICAL SPECIFICATION

ENGINE

Transmission
Driveline
Maximum power (PS/kW/rpm)
Maximum torque (Nm/rpm)
Capacity (cc)
No. of cylinders/Valves per cylinder
Cylinder layout
Bore/stroke (mm)
Compression ratio (:1)
Fuel tank capacity - useable litres

PETROL
V8 P525
Automatic
All Wheel Drive (AWD)
525 / 386 / 6.000-6.500
625 / 2.500-5.500
4.999,7
8 / 4
Longitudinal V8
92,5 / 93,0
9,5
90

FUEL ECONOMY - NEDC EQUIVALENT (NEDC2)*

Seating		
NEDC2 Consumption	Urban	l/100km (mpg)
	Extra Urban	l/100km (mpg)
	Combined	l/100km (mpg)
NEDC2 CO ₂ Emissions	Urban	g/km
	Extra Urban	g/km
	Combined	g/km

	Class A	Class C
	5	5
	17,0 (16,6)	17,0 (16,6)
	10,3 (27,4)	10,3 (27,4)
	12,8 (22,1)	12,8 (22,1)
	386	386
	234	234
	290	290

FUEL ECONOMY - WLTP**

Seating		
WLTP Consumption Test Energy	Low	l/100km (mpg)
	Medium	l/100km (mpg)
	High	l/100km (mpg)
	Extra High	l/100km (mpg)
	Combined	l/100km (mpg)
WLTP CO ₂ Emissions	Low	g/km
	Medium	g/km
	High	g/km
	Extra High	g/km
	Combined	g/km

	5
	21,6-21,9 (13,0-12,9)
	14,3-14,6 (19,7-19,3)
	12,5-12,9 (22,6-21,9)
	14,2-14,6 (19,9-19,3)
	14,7-15,1 (19,2-18,8)
	489-494
	324-330
	282-291
	321-330
	332-340

Class A (All wheels with All-season tyres)
Class C (All wheels with Off-road tyres)

*The figures provided are NEDC2 calculated from official manufacturer's WLTP tests in accordance with EU legislation. For comparison purposes only. Real world figures may differ. CO₂ and fuel economy figures may vary according to factors such as driving styles, environmental conditions, load, wheel fitment and accessories fitted. NEDC2 are figures calculated using a Government formula from WLTP figures equivalent to what they would have been under the old NEDC test. The correct tax treatment can then be applied.

**The figures provided are as a result of official manufacturer's tests in accordance with EU legislation. For comparison purposes only. Real world figures may differ. CO₂ and fuel economy figures may vary according to factors such as driving styles, environmental conditions, load, wheel fitment and accessories fitted.

DEFENDER 110 TECHNICAL SPECIFICATION

	PETROL
PERFORMANCE	V8 P525
Acceleration (secs) 0-100km/h (0-60mph)	5,4 (5,1)
Maximum speed km/h (mph)	240 (149)*
BRAKES	
Front type	6 piston opposed monobloc caliper and ventilated disc
Front diameter (mm)	380
Rear type	Single piston sliding fist with iEPB and ventilated disc
Rear diameter (mm)	365
Park Brake	Integrated Electric Parking Brake (iEPB)
WEIGHTS (kg)**	
Seating	5
Unladen weight (EU)†	2.678
Unladen weight (DIN)††	2.603
Gross Vehicle Weight (GVW)	3.230
Maximum Payload‡	Up to 620
TOWING (kg)	
Seating	5
Unbraked trailer	750
Maximum towing	3.500
Maximum coupling point/nose weight	150
Maximum vehicle and trailer combination	6.730
ROOF CARRYING (kg)	
Maximum roof load	0‡‡
Maximum static roof load	300

*Max speed is 191km/h (119mph) when fitted with off-road tyres.

**Weights reflect vehicles to standard specifications. Optional extras increase weight.

†Includes a 75kg driver, full fluids and 90% fuel.

††Includes full fluids and 90% fuel.

‡Dependent on specifications and seating configuration.

‡‡Defender V8 models have no dynamic roof loading capacity.

DEFENDER 90 DIMENSIONS AND CAPABILITY

STANDARD RIDE HEIGHT

With roof antenna (Coil suspension / Air suspension)
1.974mm / 1.969mm

HEADROOM

Maximum front/rear headroom:
With standard roof 1.030mm / 980mm
With panoramic roof 1.030mm / 946mm
With folding fabric roof 1.030mm / 946mm

LEGROOM

Maximum front legroom 993mm
Maximum rear legroom second row 929mm

LOADSPACE CAPACITY

Height 904mm, Width 1.183mm
Loadspace width between arches 1.124mm
Maximum loadspace volume
behind first row Dry* 1.263 litres, Wet* 1.563 litres
behind second row Dry* 297 litres, Wet* 397 litres

OBSTACLE CLEARANCE

Off-road (Coil suspension / Air suspension) 226mm / 291mm
Standard (Coil suspension / Air suspension) 225mm / 216mm

TURNING CIRCLE

Kerb-to-kerb 11,3m
Wall-to-wall 12,0m
Turns lock-to-lock 2,7

WADING DEPTH

Maximum wading depth (Coil suspension / Air suspension)
850mm / 900mm

Width 2.008mm mirrors folded
Width 2.105mm mirrors out



Front wheel track
Air suspension 1.706mm†
Coil suspension 1.704mm††



Rear wheel track
Air suspension 1.702mm†
Coil suspension 1.700mm††

Length behind
second row 460mm



Loadspace
width
1.183mm

Length behind
first row 1.313mm

Overall Length 4.583mm (4.323mm without Spare wheel)



	A	B	C
Ride Height			
Off-road** - Coil (Air)	31,5° (37,5°)	25,5° (31,0°)	35,5° (40,0°)
Standard - Coil (Air)	31,0° (30,1°)	25,0° (24,2°)	37,9° (37,6° ^Δ)



*Dry: volume as measured with VDA-compliant solid blocks (200mm x 50mm x 100mm). Wet: volume as measured by simulating the loadspace filled with liquid. **In off-road height and tow eye cover removed. †1.703mm with 22" wheels. ††1.701mm with 22" wheels. †1.700mm on 20" wheels. 1.699mm on 22" wheels. ††1.702mm on 20" wheels. 1.697mm on 22" wheels. ^ΔDeparture angle on Defender V8 models is 33,5°.

Fitting of side tubes or side steps may affect the off-road capability of the vehicle. Challenging off-road driving requires full training and experience.

DEFENDER 110 DIMENSIONS AND CAPABILITY

STANDARD RIDE HEIGHT

With roof antenna (Coil suspension / Air suspension) 1.972mm / 1.967mm

HEADROOM

Maximum front/rear headroom:

With standard roof 1.032mm / 1.025mm

With panoramic roof 1.032mm / 1.025mm

With folding fabric roof 1.032mm / 1.025mm

LEGROOM

Maximum front legroom 993mm

Maximum rear legroom second row (5 seat / 5 + 2 seat*) 992mm / 975mm

LOADSPACE CAPACITY

Height 904mm, Width (5 seat / 5 + 2 seat*) 1.211mm / 1.188mm

Loadspace width between arches 1.160mm

Maximum loadspace volume

behind first row (5 seat / 5 + 2 seat*)

Dry** 1.875 / 1.826 litres, Wet** 2.277 / 2.233 litres

behind second row (5 seat / 5 + 2 seat*)

Dry** 786 / 743 litres, Wet** 972 / 916 litres

behind third row Dry** 160 litres, Wet** 231 litres

OBSTACLE CLEARANCE

Off-road (Coil suspension / Air suspension) 227mm / 291mm

Standard Off-road (Coil suspension / Air suspension) 227.6mm / 218mm

TURNING CIRCLE

Kerb-to-kerb 12,84m

Wall-to-wall 13,1m

Turns lock-to-lock 2,7

WADING DEPTH

Maximum wading depth (Coil suspension / Air suspension)

850mm / 900mm

Width 2.008mm mirrors folded
Width 2.105mm mirrors out



Front wheel track
Air suspension 1.706mm†
Coil suspension 1.704mm††



Rear wheel track
Air suspension 1.702mm†
Coil suspension 1.700mm††

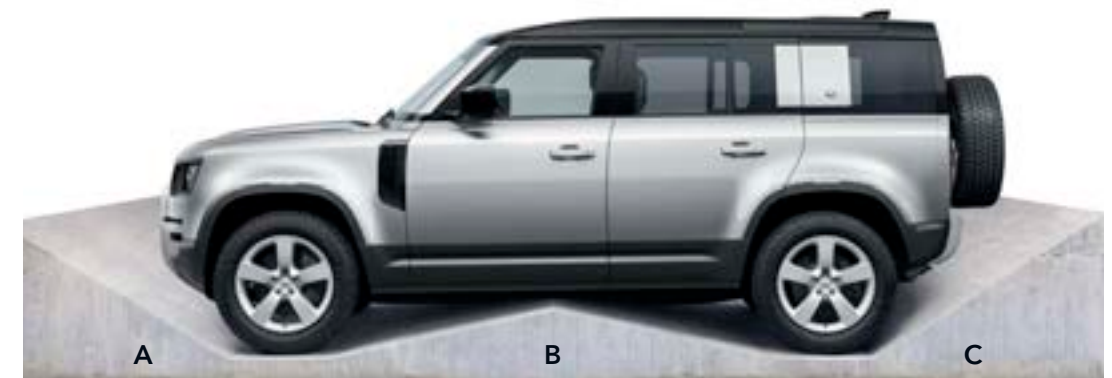
Length behind second row
(5 seat / 5 + 2 seat*) 919mm / 900mm



Loadspace width
(5 seat / 5 + 2 seat*)
1.211mm / 1.188mm

Length behind first row
(5 seat / 5 + 2 seat*) 1.763mm / 1.789mm

Overall length 5.018mm (4.758mm without Spare wheel)



	A	B	C
Ride Height			
Off-road ^Δ - Coil (Air)	31,5° (37,5°)	23,0° (28,0°)	35,5° (40,0°)
Standard - Coil (Air)	31,2° (30,1°)	22,6° (22,0°)	37,8° (37,7° ^{ΔΔ})



*Not available on P400e and P525. On P400e variants, the loadspace capacity is reduced by up to 116 litres and the loadspace floor is raised by 36mm. Please contact your local Land Rover Retailer for more information.

**Dry: volume as measured with VDA-compliant solid blocks (200mm x 50mm x 100mm). Wet: volume as measured by simulating the loadspace filled with liquid. †1.703mm with 22" wheels. ††1.701mm with 22" wheels. †1.699mm on 22" wheels. ††1.697mm on 22" wheels. ^ΔIn off-road height and tow eye cover removed. ^{ΔΔ}Departure angle on Defender V8 models is 33,5°.

Fitting of side tubes or side steps may affect the off-road capability of the vehicle. Challenging off-road driving requires full training and experience.

DEFENDER 90 HARD TOP TECHNICAL SPECIFICATION

ENGINE

Transmission
Driveline
Maximum power (PS/kW/rpm)
Maximum torque (Nm/rpm)
Capacity (cc)
No. of cylinders/Valves per cylinder
Cylinder layout
Bore/stroke (mm)
Compression ratio (:1)
Fuel tank capacity - useable litres
Diesel Exhaust Fluid (DEF) - useable litres
Diesel Particulate Filter (DPF)

DIESEL MHEV
D200
Automatic
All Wheel Drive (AWD)
200 / 147 / 4.000
500 / 1.250-2.500
2.996
6 / 4
In-line
83,0 / 92,31
15,5:1
89
20,7
■

FUEL ECONOMY - NEDC EQUIVALENT (NEDC2)*

Seating		
NEDC2 Consumption	Urban	l/100km (mpg)
	Extra Urban	l/100km (mpg)
	Combined	l/100km (mpg)
NEDC2 CO ₂ Emissions	Urban	g/km
	Extra Urban	g/km
	Combined	g/km

	Class A	Class C
Seating	2 / 3	2 / 3
NEDC2 Consumption	9,7 (29,1)	9,7 (29,1)
	6,8 (41,5)	6,8 (41,5)
	7,8 (36,2)	7,8 (36,2)
NEDC2 CO ₂ Emissions	255	255
	178	178
	207	207

FUEL ECONOMY - WLTP**

Seating		
WLTP Consumption Test Energy	Low	l/100km (mpg)
	Medium	l/100km (mpg)
	High	l/100km (mpg)
	Extra High	l/100km (mpg)
	Combined	l/100km (mpg)
WLTP CO ₂ Emissions	Low	g/km
	Medium	g/km
	High	g/km
	Extra High	g/km
	Combined	g/km

Seating	2 / 3
WLTP Consumption Test Energy	12,7 (22,2)
	9,1 (31,2)
	7,9 (35,6)
	10,1 (28,1)
	9,6 (29,5)
WLTP CO ₂ Emissions	334
	238
	208
	264
	251

■ Standard

Class A (All wheels with All-season tyres)
Class C (All wheels with Off-road tyres)

*The figures provided are NEDC2 calculated from official manufacturer's WLTP tests in accordance with EU legislation. For comparison purposes only. Real world figures may differ. CO₂ and fuel economy figures may vary according to factors such as driving styles, environmental conditions, load, wheel fitment and accessories fitted. NEDC2 are figures calculated using a Government formula from WLTP figures equivalent to what they would have been under the old NEDC test. The correct tax treatment can then be applied.

**The figures provided are as a result of official manufacturer's tests in accordance with EU legislation. For comparison purposes only. Real world figures may differ. CO₂ and fuel economy figures may vary according to factors such as driving styles, environmental conditions, load, wheel fitment and accessories fitted.

DEFENDER 90 HARD TOP TECHNICAL SPECIFICATION

	DIESEL MHEV
	D200
PERFORMANCE	
Acceleration (secs) 0-100km/h (0-60mph)	9,8 (9,2)
Maximum speed km/h (mph)	175 (109)
BRAKES	
Front type	Twin piston sliding fist caliper
Front diameter (mm)	349
Rear type	Single piston sliding fist with iEPB and ventilated disc
Rear diameter (mm)	325
Park Brake	Integrated Electric Parking Brake (iEPB)
WEIGHTS (kg)*	
Seating	2 / 3
Unladen weight (EU)**	2.285 / 2.308
Unladen weight (DIN)†	2.210 / 2.232
Gross Vehicle Weight (GVW)	2.950 / 2.980
Maximum Payload††	Up to 670
TOWING (kg)	
Seating	2 / 3
Unbraked trailer	750
Maximum towing	3.500
Maximum coupling point/nose weight	150
Maximum vehicle and trailer combination	6.450 / 6.480
ROOF CARRYING (kg)	
Maximum roof load (including cross bars)	80 / 100 [‡]
Maximum dynamic roof load (including Expedition Roof Rack)	80 / 118 ^{‡‡}
Maximum static roof load (including Expedition Roof Rack)	300

*Weights reflect vehicles to standard specifications. Optional extras increase weight.

**Includes a 75kg driver, full fluids and 90% fuel.

†Includes full fluids and 90% fuel.

††Dependent on specifications and seating configuration.

‡Roof load allows for up to 100kg when fitted Off-road tyres.

‡‡Dynamic roof load allows for up to 118kg when fitted with Off-road tyres.

DEFENDER 110 HARD TOP TECHNICAL SPECIFICATION

			DIESEL MHEV			
ENGINE			D250		D300	
Transmission			Automatic		Automatic	
Driveline			All Wheel Drive (AWD)		All Wheel Drive (AWD)	
Maximum power (PS/kW/rpm)			249 / 183 / 4.000		300 / 221 / 4.000	
Maximum torque (Nm/rpm)			570 / 1.250-2.250		650 / 1.500-2.500	
Capacity (cc)			2.996		2.996	
No. of cylinders/Valves per cylinder			6 / 4		6 / 4	
Cylinder layout			In-line		In-line	
Bore/stroke (mm)			83,0 / 92,31		83,0 / 92,31	
Compression ratio (:1)			15,5:1		15,5:1	
Fuel tank capacity - useable litres			89		89	
Diesel Exhaust Fluid (DEF) - useable litres			20,7		20,7	
Diesel Particulate Filter (DPF)			■		■	
FUEL ECONOMY - NEDC EQUIVALENT (NEDC2)*			Class A		Class C	
Seating			2 / 3		2 / 3	
NEDC2 Consumption	Urban	l/100km (mpg)	9,7 (29,1)		9,7 (29,1)	
	Extra Urban	l/100km (mpg)	6,8 (41,5)		6,8 (41,5)	
	Combined	l/100km (mpg)	7,8 (36,2)		7,8 (36,2)	
NEDC2 CO ₂ Emissions	Urban	g/km	255		255	
	Extra Urban	g/km	178		178	
	Combined	g/km	207		207	
FUEL ECONOMY - WLTP**			Class A		Class C	
Seating			2 / 3		2 / 3	
WLTP Consumption Test Energy	Low	l/100km (mpg)	12,7 (22,2)		12,7 (22,2)	
	Medium	l/100km (mpg)	9,1 (31,2)		9,1 (31,2)	
	High	l/100km (mpg)	7,9 (35,6)		7,9 (35,6)	
	Extra High	l/100km (mpg)	10,1 (28,1)		10,1 (28,1)	
	Combined	l/100km (mpg)	9,6 (29,5)		9,6 (29,5)	
WLTP CO ₂ Emissions	Low	g/km	334		334	
	Medium	g/km	238		238	
	High	g/km	208		208	
	Extra High	g/km	264		264	
	Combined	g/km	251		251	

■ Standard

Class A (All wheels with All-season tyres)
Class C (All wheels with Off-road tyres)

*The figures provided are NEDC2 calculated from official manufacturer's WLTP tests in accordance with EU legislation. For comparison purposes only. Real world figures may differ. CO₂ and fuel economy figures may vary according to factors such as driving styles, environmental conditions, load, wheel fitment and accessories fitted. NEDC2 are figures calculated using a Government formula from WLTP figures equivalent to what they would have been under the old NEDC test. The correct tax treatment can then be applied.

**The figures provided are as a result of official manufacturer's tests in accordance with EU legislation. For comparison purposes only. Real world figures may differ. CO₂ and fuel economy figures may vary according to factors such as driving styles, environmental conditions, load, wheel fitment and accessories fitted.

DEFENDER 110 HARD TOP TECHNICAL SPECIFICATION

	DIESEL MHEV	
	D250	D300
PERFORMANCE		
Acceleration (secs) 0-100km/h (0-60mph)	8,4 (7,9)	7,1 (6,7)
Maximum speed km/h (mph)	188 (117)	191 (119) [▲]
BRAKES		
Front type	Twin piston sliding fist caliper*	4 piston opposed 2 piece caliper*
Front diameter (mm)	349**	363**
Rear type	Single piston sliding fist with iEPB and ventilated disc	Single piston sliding fist with iEPB and ventilated disc
Rear diameter (mm)	325 [†]	350 [†]
Park Brake	Integrated Electric Parking Brake (iEPB)	Integrated Electric Parking Brake (iEPB)
WEIGHTS (kg)^{††}		
Seating	2 / 3	2 / 3
Unladen weight (EU) [‡]	2.420 / 2.447	2.420 / 2.447
Unladen weight (DIN) ^{‡‡}	2.345 / 2.372	2.345 / 2.372
Gross Vehicle Weight (GVW)	3.150 / 3.190 ^Δ	3.150 / 3.190 ^Δ
Maximum Payload ^{ΔΔ}	Up to 800	Up to 800
TOWING (kg)		
Seating	2 / 3	2 / 3
Unbraked trailer	750	750
Maximum towing	3.500	3.500
Maximum coupling point/nose weight	150	150
Maximum vehicle and trailer combination	6.650 / 6.690 [◊]	6.650 / 6.690 [◊]
ROOF CARRYING (kg)		
Maximum roof load (including cross bars)	100	100
Maximum dynamic roof load (including Expedition Roof Rack)	100 / 168 ^{◊◊}	100 / 168 ^{◊◊}
Maximum static roof load (including Expedition Roof Rack)	300	300

*6 piston opposed monobloc caliper when fitted with 22" wheels.
 **380mm when fitted with 22" wheels.
 †365mm when fitted with 22" wheels.
 ††Weights reflect vehicles to standard specifications. Optional extras increase weight.
 ‡Includes a 75kg driver, full fluids and 90% fuel.
 ‡‡Includes full fluids and 90% fuel.
 ΔWith coil suspension. 3.220 / 3.260kg with air suspension.
 ΔΔDependent on specifications and seating configuration.
 ◊With coil suspension. 6.720 / 6.760kg with air suspension.
 ◊◊Dynamic roof load allows for up to 168kg when fitted with Off-road tyres.
 ▲Max speed is 209km/h (130mph) when fitted with 22" wheels.

DEFENDER HARD TOP DIMENSIONS AND CAPABILITY

	90 HARD TOP		110 HARD TOP	
HEADROOM				
Maximum front headroom (mm)	1.030		1.032	
LEGROOM				
Maximum front legroom (mm)	993		993	
LOADSPACE CAPACITY				
Height (mm)	Up to 947		Up to 937	
Width (mm)	Up to 1.326		Up to 1.423	
Width between arches (mm)	1.124		1.160	
Length behind partition (mm)	Up to 1.037		Up to 1.472	
Maximum loadspace volume behind partition Dry / Wet (litres)	1.115 / 1.355		1.719 / 2.059	
TURNING CIRCLE				
Kerb-to-Kerb (m)	11,3		12,84	
Wall-to-wall (m)	12,0		13,1	
Turns lock-to-lock (no. of turns)	2,7		2,7	
WADING DEPTH				
Maximum wading depth - Coil suspension / Air suspension (mm)	850 / NA		850 / 900	
DIMENSIONS				
Height - Coil suspension / Air suspension (mm)	1.974 / NA		1.972 / 1.967	
Length (mm)	4.583		5.018	
Width with mirrors folded (mm)	2.008		2.008	
Width with mirrors out (mm)	2.105		2.105	
Front wheel track - Coil suspension / Air suspension (mm)	1.704,1 / NA		1.703,7 / 1.706,2*	
Rear wheel track - Coil suspension / Air suspension (mm)	1.699,7** / NA		1.700 / 1.701,7†	
Wheelbase (mm)	2.587		3.022	
GROUND CLEARANCE	STANDARD	OFF-ROAD	STANDARD	OFF-ROAD
Ride height - Coil suspension / Air suspension (mm)	225 / NA	226 / NA	227,6 / 218	227 / 291††
Approach Angle - Coil suspension / Air suspension	31,0° / NA	31,5° / NA	31,2° / 30,1°	31,5° / 37,5°
Departure Angle - Coil suspension / Air suspension	37,9° / NA	35,5° / NA	37,8° / 37,7°	35,5° / 40,0°††
Ramp Angle - Coil suspension / Air suspension	25,0° / NA	25,5° / NA	22,6° / 22,0°	23,0° / 27,8°††



DEFENDER 90 HARD TOP



DEFENDER 110 HARD TOP

*1.703,6 (Coil suspension on 19"-20" wheels. 1.700,7 (Coil suspension) / 1.703,2 (Air suspension) with 22" wheels. **1.699,6 with 20" wheels. †1.697 (Coil suspension) / 1.698,8 (Air suspension) with 22" wheels. ††The figures provided are manufacturer's estimates and will be replaced with the official EU test figures as soon as they are available. For comparison purposes only. Real-world figures may differ.

Dry: volume as measured with VDA-compliant solid blocks (200mm x 50mm x 100mm). Wet: volume as measured by simulating the loadspace filled with liquid. Includes underfloor stowage, excludes jack and tools.